

TECHNICAL CATLOG

**PRECISION IN ACTION,
AHEAD OF THE CURVE.**

www.cylcoreducer.com

1	ABOUT US
3	LOAD CLASSIFICATION TABLE
4	OVERHUNG LOAD
5	SERVICE FACTOR
5	SELECTION PROCEDURE
7	REDUCTION RATIOS
8	FOOT MOUNTED SPEED REDUCERS
18	FLANGE MOUNTED SPEED REDUCERS
29	GEARED MOTOR FLANGE MOUNTED
36	GEARED MOTOR FOOT MOUNTED
44	NOTES

INDEX

COMPANY INTRODUCTION:

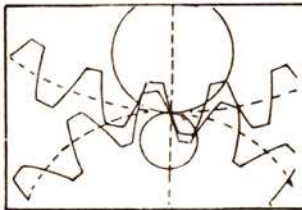
Hylo Transmissions is one of India's leading organizations for designing and manufacturing cycloidal speed reducers and cycloidal geared motors. Since 1981, Hylo Transmissions, a renowned enterprise that has been serving transmission needs in the fields of oil/solids separation (oil drilling, refining, dewatering), pharmaceuticals, industrial and biological wastewater treatment, precious metal recovery, and food processing. With the use of cutting-edge infrastructure and state of art manufacturing facility, we have been able to satisfy the high supply demand.

PRODUCT DESCRIPTION:

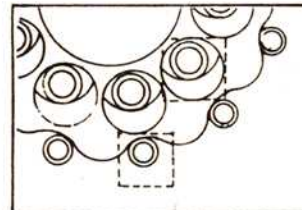
Hylo provides one of the premium solutions through its cycloid speed reducers and gear motors. The ground-breaking HYLO design offers performance that is quieter, more effective, more dependable, and more durable than involute tooth gear designs. Hylo's reduction components work in compression rather than shear, which produces a performance that is incredibly tough and shock resistant. Hylo's technology offers the widest selection of application possibilities currently accessible when combined with cutting-edge product options and accessories.

PRODUCT FEATURES:

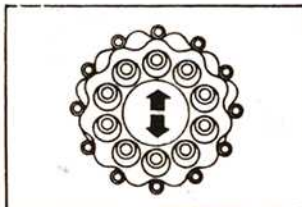
- Cycloidal speed reduction technology
- ~ Quiet, efficient, and reliable operation with high torque density and compact size
- Modular design
- ~ Interchangeable cast iron housings in the foot, flanged, or face mount configurations
- Universal mounting arrangements
- ~ Available free-shaft, quill hollow shaft,
- Internal components manufactured from hardened, vacuum-degassed, bearing grade steel
- ~ Minimal vibration, low noise, low backlash, and extended operational life
- The best product warranty
- ~ The 24month warranty backs up the superb Hylo product reputation



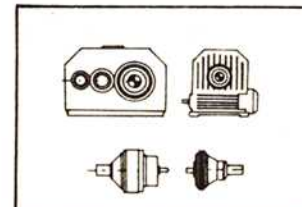
Torque transmitting teeth of conventional reducers grind, wear and lose efficiency.



All torque transmitting parts of HYLO gears roll, don't grind an optimally frictionless system.

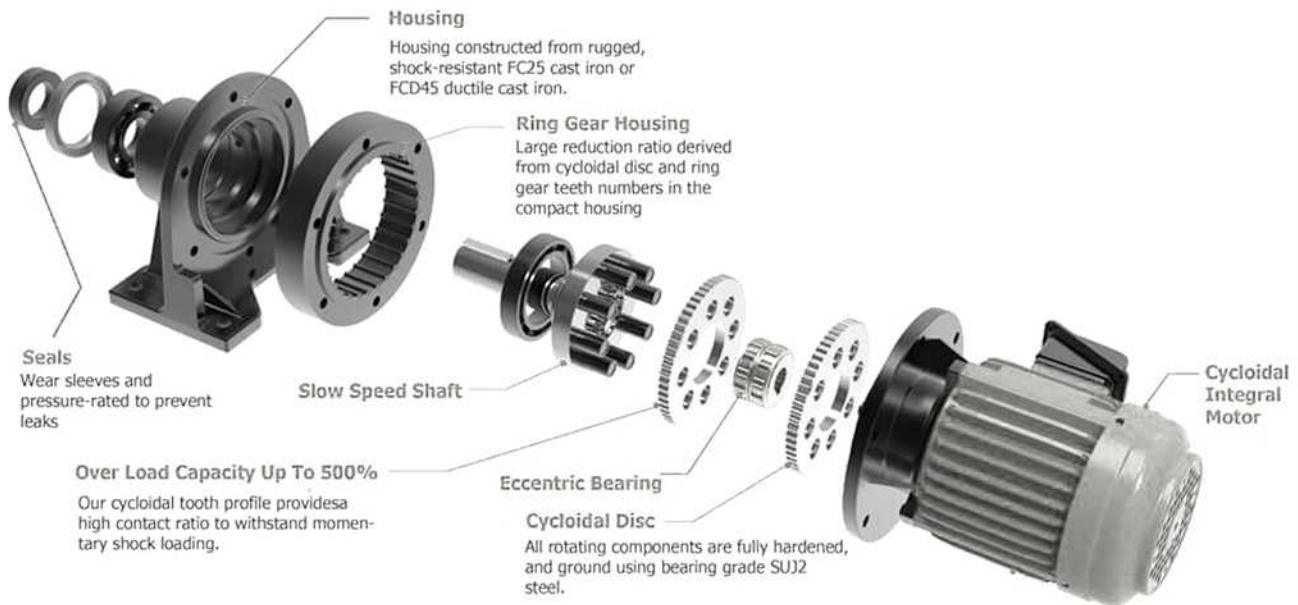


The symmetrical arrangement of all parts around the shaft perfectly balance centrifugal forces. The result is smooth, vibrationless and quiet operation.



HYLO gears are considerably smaller than conventional reducers without compromising of efficiency.





HOW DO CYCLOIDAL GEARBOXES WORK?

Torque transmitted to the high speed shaft rotates the eccentric cam and roller bearing assembly, and rolls the cycloid discs around the internal circumference of the stationary ring gear housing.

The teeth of the cycloid disc contact the pins of the stationary ring gear, producing a reverse rotation at a reduced speed. Each rotation of the high speed shaft advances the cycloid discs a distance of one tooth pitch in the opposite direction.

The reduced rotation of the cycloid discs is transmitted to the output shaft assembly by means of drive pins and rollers, that are projected through holes located around the bore of the cycloid discs.

Cycloidal gearboxes, cyclo reducers and derivatives are cyclo drives used for hard wearing industrial applications because they are not as susceptible to sudden failures as toothed gears, are low maintenance and easily sealed.

CYCLOIDAL GEARBOXES ARE VERY GOOD FOR:

- Mission critical machinery
- Extreme working environments and weather conditions
- Very high positional accuracy
- Servo systems, stop-start applications
- Sudden high torque loadings



Load Classifications Table



TYPE OF APPLICATION	TYPE OF LOAD	TYPE OF APPLICATION	TYPE OF LOAD	TYPE OF APPLICATION	TYPE OF LOAD
Agitators		Large (industrial)	M	Paper Mills	
Pure liquids	U	Light (small diameter)	U	Agitators (mixers)	M
Liquids and solids	M	Feeders		Barker, hydraulic	S
Variable-density liquids	M	Apron	M	Barker, mechanical	S
Blowers		Belt	M	Barking drum	S
Centrifugal	U	Disc	U	Beater and pulper	M
Lobe	M	Reciprocating	H	Bleacher	U
Vane	U	Screw	M	Calenders	M
Brewing and Distilling		Food Industry		Calenders, super	H
Bottling machinery	U	Beet slicer	M	Converting machine (except cutters, platers)	M
Brew kettles, cont. duty	U	Cereal cooker	U	Conveyors	U
Cookers, cont. duty	U	Dough mixer	M	Couch	M
Mash tubs, cont. duty	U	Meat grinders	M	Cutters, platers	H
Scale hopper, frequent starts	M	Generators (Not Welding)	U	Cylinders	M
Can Filling Machines	U	Hammer Mills	H	Dryers	M
Cane Knives	M	Hoists		Felt stretcher	M
Car Dumpers	H	Heavy duty	H	Felt whipper	H
Car Pullers	M	Medium duty	M	Jordans	H
Clarifiers	U	Skip	M	Log haul	H
Classifiers	M	Laundry Washers — Reversing	M	Presses	U
Clay Working Machinery		Laundry Tumblers	M	Pulp machine reel	M
Brick press	H	Line Shaft		Stock chest	M
Briquette machine	H	Drive processing equipment	M	Suction roll	U
Clay working machinery	M	Light	U	Washers and thickeners	M
Pug mill	M	Other line shafts	U	Winders	U
Compressors		Lumber Industry		Printing Presses	S
Centrifugal	U	Barkers — hydraulic and mechanical	S	Pullers, Barge Haul	H
Lobe	M	Burner conveyor	M	Pumps	
Reciprocating, multi-cylinder	M	Chain Saw and Drag Saw	H	Centrifugal	U
Reciprocating, single-cylinder	H	Chain transfer	H	Proportioning	M
Conveyors — Uniformly Loaded or Fed		Craneway transfer	H	Reciprocating	
Apron	U	De-barking drum	S	Single acting, 3 or more cylinders	M
Assembly	U	Edger feed	M	Double acting, 2 or more cylinders	M
Belt	U	Gang feed	H	Rotary-gear type	U
Bucket	U	Geen chain	M	Rubber and Plastics Industries	
Chain	U	Live rolls	H	Crackers	H
Flight	U	Log haul-lockline	H	Laboratory equipment	M
Oven	U	Log turning device	H	Mixing mills	H
Screw	U	Main log conveyor	H	Refiners	M
Conveyors — Heavy Duty, Not Uniformly Fed		Off bearing rolls	M	Rubber calenders	M
Apron	M	Planer feed chains	M	Rubber mill (2 on line)	M
Assembly	M	Planer floor chains	M	Rubber mill (3 on line)	U
Belt	M	Planer tilting hoist	M	Sheeter	M
Bucket	M	Re-saw merry-go-round conveyor	M	Tire building machines	S
Chain	M	Roll cases	H	Tire and tube press openers	S
Flight	M	Slab conveyor	H	Tubers and strainers	M
Live roll oven	M	Small waste-conveyor-belt	U	Warming mills	M
Reciprocating	H	Small waste-conveyor-chain	M	Sand Muller	M
Screw	M	Sorting table	M	Screens	
Shaker	H	Tipple hoist conveyor	M	Air washing	U
Cranes (Except for Dry Dock Cranes)		Tipple hoist drive	M	Rotary, stone or gravel	M
Main hoists	U	Transfer conveyors	M	Traveling water intake	U
Bridge travel	S	Transfer rolls	M	Sewage Disposal Equipment	
Trolley travel	S	Tray drive	M	Bar screens	U
Crusher		Trimmer feed	M	Chemical fenders	U
Ore	H	Waste conveyor	M	Collectors, circuline or straightline	U
Stone	H	Machine Tools		Dewatering screens	M
Sugar	M	Bending roll	M	Grit collectors	U
Dredges		Notching press, belt driven	S	Scum breakers	M
Cable reels	M	Plate planer	H	Slow or rapid mixers	M
Conveyors	M	Punch press, gear driven	H	Sludge collectors	U
Cutter head drives	H	Tapping machine	H	Thickeners	M
Jig drives	H	Other machine tools		Vacuum filters	M
Maneuvering winches	M	Main drives	M	Slab Pushers	M
Pumps	M	Auxiliary drives	U	Steering Gear	S
Screen drive	H	Metal Mills		Stokers	U
Stackers	M	Draw bench carriage and main drive	M	Sugar Industry	
Utility winches	M	Forming machines	H	Cane knives	M
Dry Dock Cranes	S	Pinch, dryer and scrubber rolls, reversing	S	Crushers	M
Elevators		Slitters	M	Mills	H
Bucket, uniform load	U	Table conveyors, nonreversing		Textile Industry	
Bucket, heavy load	M	Group drives	M	Batchers	M
Bucket, cont.	U	Individual drives	H	Calenders	M
Centrifugal discharge	U	Table conveyors, reversing	S	Cards	M
Escalators	U	Wire drawing and flattening machine	M	Dry cans	M
Freight	M	Wire winding machine	M	Dryers	M
Gravity discharge	U	Mills, Rotary Type		Dyeing machinery	M
Man lifts	S	Ball	M	Knitting machines	S
Passenger	S	Cement kilns	M	Looms	M
Extruders (Plastics)		Dryers and coolers	M	Mangles	M
Blow molders	M	Kilns	M	Nappers	M
Coating	U	Pebble	M	Pads	M
Film	U	Rod, plain and wedge bar	M	Range drives	S
Pipe	U	Tumbling barrels	H	Slashers	M
Pre-plasticizers	M	Mixers		Soapers	M
Rods	U	Concrete mixers, cont.	M	Spinners	M
Sheet	U	Concrete mixers, intermittent	M	Tenter frames	M
Tubing	U	Constant density	U	Washers	M
Fans		Variable density	M	Winders	M
Centrifugal	U	Oil Industry		Windlass	
Cooling towers	S	Chillers	M		
Forced draft	S	Oil well pumps	S		
Induced draft	M	Paraffin filter press	M		
Large (mine, etc.)	M	Rotary kilns	M		

U = Uniform Load H = Heavy Shock
M = Moderate Shock S = Contact hylo

ALLOWABLE OVERHANG LOAD



The Hylo speed reducers are provided with suitable ball bearing to take overhang loads. The values of safe overhung load P at 10mm from end of casing on input and on output side are tabulated below.

TABLE FOR OVER HUNG LOAD IN KG.

(BASED ON 1440 RPM MOTOR)

INPUT SIDE

MODEL	P	K
CY105	26	53
CY135	70	60
CY150	45	74
CY205	35	83
CY230	70	94
CY318	139	104
CY362	139	115
CY390	179	125
CY451	208	136
CY471	278	146
CY507	307	157
CY549	546	167
CY591	581	178
CY637	670	188
CY703	1012	199
CY772	1123	209
CY986	1194	220

Whenever a sprocket gear, sheave, pulley or flexible coupling is mounted on the shaft, the overhung load can

be calculated by the formula.

$$\text{Overhung load (in kg)} = \frac{716200 \times \text{HP} \times \text{M}}{\text{N} \times \text{R}}$$

Where HP-HP carried by the shaft rpm

N - Shaft rpm

R – Pitch radius of sprocket, gear, sheave, pulley or coupling bolts or spider arms

M-factor as per following table

Overhung member	M factor
Sprocket	1.00
Spur Pinion	1.25
V belt sheave	1.50
Flat bely pulley	3.00

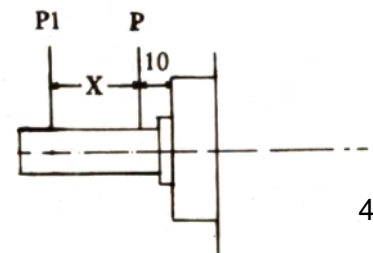
OUTPUT SIDE

MODEL	P.....RATIOS.....										K
	7	11	23	29	35	43	47	59	71	87	
CY105	41	47	52	56	60	64	66	71	76	80	39
CY135	148	172	190	205	218	230	230	230	230	230	57
CY150	167	193	213	238	255	272	272	280	324	344	61
CY205	323	460	525	525	525	525	525	525	525	525	74
CY230	1103	1202	1490	1490	1490	1490	1490	1490	1490	1490	85
CY318	1764	1926	2232	2232	2232	2232	2232	2232	2232	2232	107
CY362	2412	2619	2988	2988	2988	2988	2988	2988	2988	2988	118
CY390	3173	3461	4217	4217	4217	4217	4217	4217	4217	4217	129
CY451	3510	3870	5355	5940	5940	5940	5940	5940	5940	5940	140
CY471	-	-	-	-	-	-	9000	9000	9000	9000	151
CY507	-	-	-	-	-	-	-	-	11025	12015	162
CY549	5715	6030	8460	9225	9720	10395	11295	12690	13680	14985	184
CY591	-	7515	10620	11520	12195	13005	14265	16065	17145	18540	195
CY637	-	8010	11295	12285	13005	13995	15165	17055	18360	20025	206
CY703	-	9900	14085	15300	16065	17145	18765	21240	22635	24705	239
CY772	-	11925	16785	18360	19350	20745	22635	25605	27270	28575	250
CY986	-	-	-	27495	27495	27495	27495	27495	27495	27495	360

These values are for various ratios for output side and for various models. The value of factor K which are tabulated for input and output side are to be used for calculating safe overhung load when distance of the loa from casing is greater than 10mm. If the distance of the load from casing is greater than 10 mm. If the distance of load position of load P in the figure at rights X mm

then safe overhung load P1 is given by

$$P1 = P \times \frac{K}{K + X}$$



A SUITABLE SERVICE FACTOR IS TO CONSIDERED WHILE SELECTING THE MODEL

SERVICE FACTORS FOR HYLO SPEED REDUCERS

SERVICE FACTORS = S1 X S2

S1- Factor depending on type of prime mover

S2- Factor depending on type of load and daily working hours.

TABLE FOR FACTOR S1

PRIME MOVER

Electric motor and turbine	1.0
Piston Engines 4 to 6 cylinders	1.25
Piston Engines 1 to 3 cylinders	1.5

TABLE FOR FACTOR S2

DUTY CYCLE	TYPE OF LOAD		
	Uniform	Moderate Shock	Heavy Shock
Daily Services(hr)			
UP to 3hrs/day	0.80	1.00	1.25
3 to 12 hr/day	1.00	1.4	1.6
12 to 24 hr/day	1.4	1.8	2.00

SELECTION PROCEDURE

A) Based on load torque

1. Determine the load torque
2. Determine service factor S1 based on type of prime mover and factor S2 based on type of load & No. of working hours per day. Find service factor S which is product of S1 & S2.
3. Determine rated output torque of reducer by multiplying load torque by service factor S.
4. Determine the rpm required at the output shaft of gearbox and determine required ratio by the formula.

$$\text{required ration} = \frac{\text{rpm of prime mover}}{\text{required rpm at output shaft}}$$

5. Select model & ratio from table no 2, such that the rated output torque in the table is equal to or higher than calculated rated output torque & the ratio in the table is closer to required ratio.
6. The Minium motor HP can then be calculated by the formula

Minimum motor HP =

$$\frac{2 \times \pi \times \text{Load torque} \times \text{motor rpm}}{\text{ratio selected} \times 4500 \times \eta}$$

Where

η = Reducer efficiency = 0.93 for single stage reducer
= 0.86 for two stage reducers

Load torque should not be calculated for motor HP particularly for multistage reducers, this usually gives incorrect results forcing one to select a very large reducer compared to what is actually required.

Note: If the motor to be fitted has horse power greater than 1.1 times minimum motor HP, the gear box should be protected but proper shear pin or torque limiter.

Example: A HYLO Speed Reducer is to be selected for the following specifications

1. Prime mover – Electric motor, 1440 rpm
 2. Duty cycles – 8 hrs. per day.
 3. Type of load required- moderate shock
 4. Output rpm required = 3rpm
 5. Output torque required – 16 kgm
-

1. Load torque is 16 Kgm
2. Looking at table 1, factor S1 is 1.00 and factor S2 , is 1.4 Service factor S=1.00x1.4=1.4
3. Rated output torque=1.4 x 16 = 22.4 kgm
4. RPM at output shaft is 3 therefore required ratio is
$$\frac{1440}{3} = 480$$

5. Looking at table no 2, we see the following

Model CY 150 gives 30Kgm torque & reduction ratio 493 is available.

6. $\eta=0.86$ since we have selected a double stage reducer. The minimum motor HP is given by

$$\frac{2 \times \pi \times \text{Load torque} \times \text{motor rpm}}{\text{ratio selected} \times 4500 \times \eta}$$
$$= \frac{2 \times \pi \times 22.4 \times 1440}{493 \times 4500 \times 0.86} = 0.10$$

Therefore 0.125 HP motor may be used. Since motor HP exceeds 1.1 x minimum motor HP, it is necessary to protect the gearbox by shear pin or torque limiter.

TABLE NO. 2.

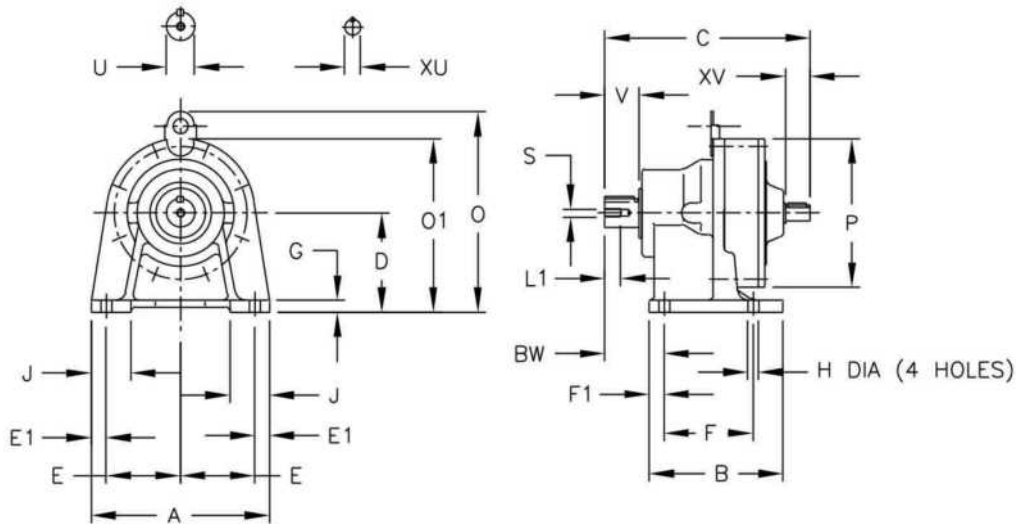
MODEL	REDUCTION RATIOS		OUTPUT TORQUE KG.M
	SINGLE STAGE	DOUBLE STAGE	
CY105	7,9,11,17,23,29,35	81,99,121,153,187,207,253,261,289,315,319,385,391, 493,529,595,667,805,841,493,529,595,667,805,841, 1015,1225	3
			6
CY135	7,9,11,17,23,29,35,47	81,99,121,153,187,207,253,261,289,315,319,385,391, 493,529,595,667,805,841,493,529,595,667,805,841, 1081,1363,1645	9
			15
CY150	7,9,11,17,23,29,35,47,59,71	99,121,153,187,207,253,261,289,315,319,385,391, 493,529,595,667,805,841,493,529,595,667,805,841, 1081,1363,1645,1711,2021,2397,2773	20
			30
CY205	9,11,17,23,29,35,47,59,71	121,153,187,207,253,261,289,315,319,385,391, 493,529,595,667,805,841,493,529,595,667,805,841, 1081,1363,1645,1711,2021,2397,2773	50
			90
CY230	9,11,17,23,29,35,47,59,71,87	121,153,187,207,253,261,289,315,319,385,391, 493,529,595,667,805,841,493,529,595,667,805,841, 1081,1363,1645,1711,2021,2397,2773	100
			200
CY318	11,17,23,29,35,47,59,71,87	187,207,253,261,289,315,319,385,391, 493,529,595,667,805,841,493,529,595,667,805,841, 1081,1363,1645,1711,2021,2397,2773	140
			260
CY362	23,29,35,47,59,71,87	253,261,289,315,319,385,391, 493,529,595,667,805,841,493,529,595,667,805,841, 1081,1363,1645,1711,2021,2397,2773	250
			425
CY390	23,29,35,47,59,71,87	253,261,289,315,319,385,391, 493,529,595,667,805,841,493,529,595,667,805,841, 1081,1363,1645,1711,2021,2397,2773	300
			600
CY451	23,29,35,47,59,71,87	253,261,289,315,319,385,391, 493,529,595,667,805,841,493,529,595,667,805,841, 1081,1363,1645,1711,2021,2397,2773	500
			950
CY471	29,35,47,59,71,87	253,261,289,315,319,385,391, 493,529,595,667,805,841,493,529,595,667,805,841, 1081,1363,1645,1711,2021,2397,2773	800
			1500
CY507	29,35,47,59,71,87	253,261,289,315,319,385,391, 493,529,595,667,805,841,493,529,595,667,805,841, 1081,1363,1645,1711,2021,2397,2773	1000
			1800
CY549	35,47	385,781,805,1015,1225,1505,1633,2059,2065,2485,3045, 3053,4189,5041	1500
			2200
CY591	35,47	385,781,805,1015,1225,1505,1633,2059,2065,2485,3045, 3053,4189,5041	1900
			2600
CY637	35,47	385,781,805,1015,1225,1505,1633,2059,2065,2485,3045, 3053,4189,5041	2300
			3000
CY703	35,47	385,781,805,1015,1225,1505,1633,2059,2065,2485,3045, 3053,4189,5041	2800
			3500
CY772	35,47	385,781,805,1015,1225,1505,1633,2059,2065,2485,3045, 3053,4189,5041	3600
			5000
CY986	35,47	385,781,805,1015,1225,1505,1633,2059,2065,2485,3045, 3053,4189,5041	6000
			9000

*NOTE: In case your reduction ratio falls outside the ratios mentioned above pls get in touch with us to discuss. *

Dimensions for Foot Mount Single Stage Reducer



CYF Series



All dimensions are in mm

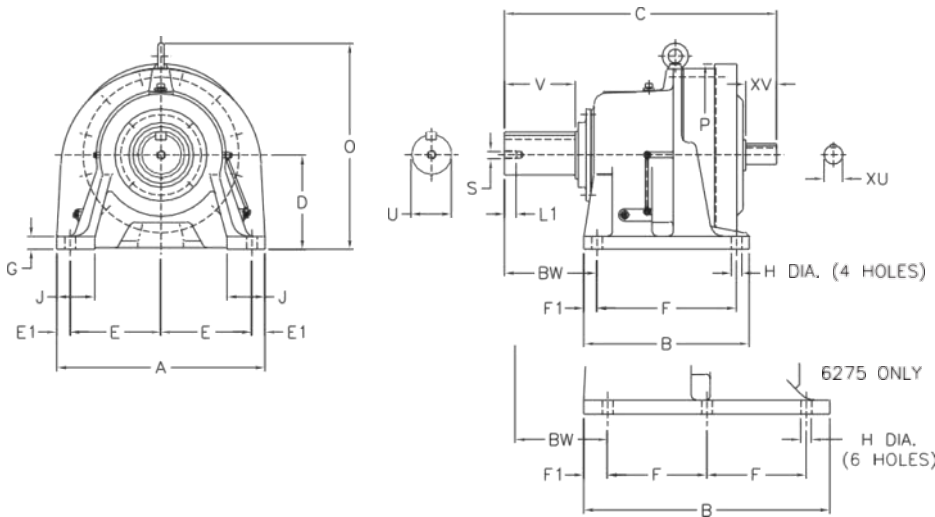
Model	A	B	C	D	E	E1	F	F1	G	H	J	O1	O	P	BW
CYF105	144	84	145	80	60	12	60	12	10	9	35	135	-	105	41
CYF105	144	84	151	80	60	12	60	12	10	9	35	135	-	105	47
CYF135	144	99	179	90	60	12	75	12	13	9	37	157	-	135	52
CYF150	180	135	202	100	75	15	90	15	12	11	40	175	-	150	60
CYF150	180	135	208	100	75	15	90	15	12	11	40	-	207	150	60
CYF150	180	135	208	120	75	15	90	15	12	11	45	-	227	150	60
CYF162	180	135	218	120	75	15	90	15	12	11	45	-	236	162	70
CYF205	230	155	259	120	95	20	115	20	15	14	55	-	257	205	82
CYF205	230	155	259	140	95	20	115	20	15	14	60	-	277	205	82

Model	Low Speed Shaft					High Speed Shaft			Approx. Wt. (kg.)
	U	V	S	L1	KEY	XY	XV	KEY	
CYF105	12	25	M6 x 1	16	4 x 4 x 20	12	25	4 x 4 x 18	2
CYF105	19	30	M6 x 1	16	5 x 5 x 27	12	25	4 x 4 x 18	2
CYF135	25	35	M6 x 1	16	5 x 5 x 30	12	25	4 x 4 x 18	8
CYF150	30	35	M8 x 1.25	20	6 x 6 x 30	16	25	5 x 5 x 20	11
CYF150	30	35	M8 x 1.25	20	6 x 6 x 30	16	25	5 x 5 x 20	13
CYF150	30	35	M8 x 1.25	20	6 x 6 x 30	16	25	5 x 5 x 20	14
CYF162	35	45	M8 x 1.25	20	6 x 6 x 38	16	25	5 x 5 x 20	15
CYF205	40	55	M8 x 1.25	20	10 x 8 x 45	19	35	5 x 5 x 25	24
CYF205	40	55	M8 x 1.25	20	10 x 8 x 45	19	35	5 x 5 x 25	25

Dimensions for Foot Mount Single Stage Reducer



CYF Series



All dimensions are in mm

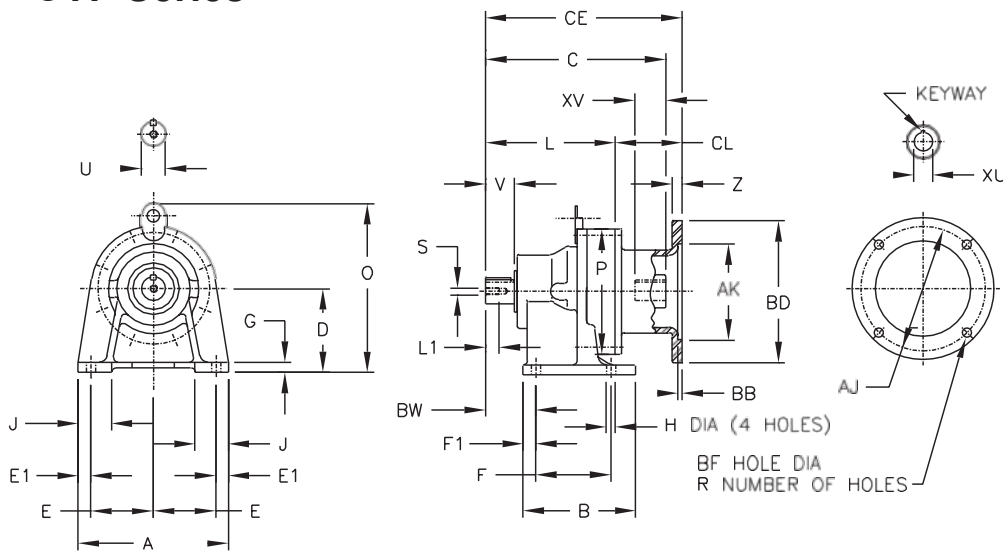
Model	A	B	C	D	E	E1	F	F1	G	H	J
CYF230	330	195	321	150	145	20	145	25	22	18	65
CYF230	330	195	341	150	145	20	145	25	22	18	65
CYF230	330	195	341	160	145	20	145	25	22	18	70
CYF318	410	238	413	160	185	20	150	44	25	18	75
CYF318	410	238	413	200	185	20	150	44	25	18	80
CYF362	430	335	477	200	190	25	275	30	30	22	80
CYF390	470	380	527	220	210	25	320	30	30	22	85
CYF451	530	440	620	250	240	25	380	30	35	26	90
CYF471	530	440	678	250	220	45	360	40	35	26	100
CYF507	580	475	708	265	240	50	395	40	40	26	110
CYF549	620	520	752	280	270	40	420	50	40	33	115
CYF591	670	560	839	300	290	45	460	50	45	33	120
CYF637	720	580	877	335	315	45	480	50	45	39	128
CYF703	780	630	1040	375	335	55	520	55	50	39	140
CYF772	880	700	1150	400	385	55	590	55	55	45	160
CYF986	1160	1040	1462	540	525	55	420	100	60	45	200

Model	Low Speed Shaft					High Speed Shaft			Approx. Wt. (kg.)
	U*	V	s	L1	Key	XU*	XV	Key	
CYF230	50	70	M10 x 1.5	18	14 x 9 x 55	22	40	5 x 5 x 35	42.75
CYF230	50	90	M10 x 1.5	18	14 x 9 x 75	22	40	5 x 5 x 35	43.65
CYF230	50	90	M10 x 1.5	18	14 x 9 x 75	22	40	5 x 5 x 35	45.45
CYF318	60	90	M10 x 1.5	18	14 x 9 x 75	30	45	6 x 6 x 45	83.25
CYF318	60	90	M10 x 1.5	18	14 x 9 x 75	30	45	6 x 6 x 45	88.2
CYF362	70	90	M12 x 1.75	24	20 x 12 x 80	35	55	10 x 8 x 55	124.2
CYF390	80	110	M12 x 1.75	24	22 x 14 x 95	38	65	12 x 8 x 65	161.5
CYF451	92	135	M16 x 2	34	25x 14 x 125	45	70	12 x 8 x 70	238.5
CYF471	100	165	M16 x 2	34	28 x 16 x 165	45	82	12 x 8 x 80	252.9
CYF507	108	165	M16 x 2	34	28 x 16 x 165	48	82	14 x 9 x 80	333.5
CYF549	118	165	M16 x 2	34	32 x 18 x 165	54	82	14 x 9 x 80	405.9
CYF591	127	200	M20 x 2.5	40	32 x 18 x 200	60	105	14 x 9 x 105	499.05
CYF637	140	200	M20 x 2.5	40	32 x 18 x 200	65	105	20 x 12 x 105	609.3
CYF703	160	240	M24 x 3	50	40 x 22 x 240	80	130	22 x 14 x 130	949.5
CYF772	170	300	M24 x 3	50	45 x 25 x 300	80	130	22 x 14 x 130	1180.8
CYF986	180	330	M24 x 3	52	45 x 25 x 330	90	150	25 x 14 x 150	2440.8

Dimensions for Foot Mount Hollow Input Single Stage Reducer



CYF Series



All dimensions are in mm

Model	A	B	L	D	E	E1	F	F1	G	H	J	O	P	BW
CYF105	144	84	92	80	60	12	60	12	10	9	35	135	105	41
CYF105	144	84	98	80	60	12	60	12	10	9	35	135	105	47
CYF135	144	99	129	90	60	12	75	12	13	9	37	157	135	52
CYF150	180	135	142	100	75	15	90	15	12	11	40	175	150	60
CYF150	180	135	156	100	75	15	90	15	12	11	40	207	150	60
CYF150	180	135	156	120	75	15	90	15	12	11	45	227	150	60
CYF162	180	135	170	120	75	15	90	14	12	11	45	236	162	70

Model	Low Speed Shaft				
	U*	V	S	L1	Key
CYF105	12	25	M6 x 1	16	4 x 4 x 20
CYF105	20	30	M6 x 1	16	5 x 5 x 27
CYF135	25	35	M6 x 1	16	6 x 6 x 30
CYF150	30	35	M8 x 1.25	20	6 x 6 x 30
CYF150	30	35	M8 x 1.25	20	6 x 6 x 30
CYF150	30	35	M8 x 1.25	20	6 x 6 x 30
CYF162	35	45	M8 x 1.25	20	6 x 6 x 38

Dimensions for Foot Mount Hollow Input Single Stage Reducer



CYF Series

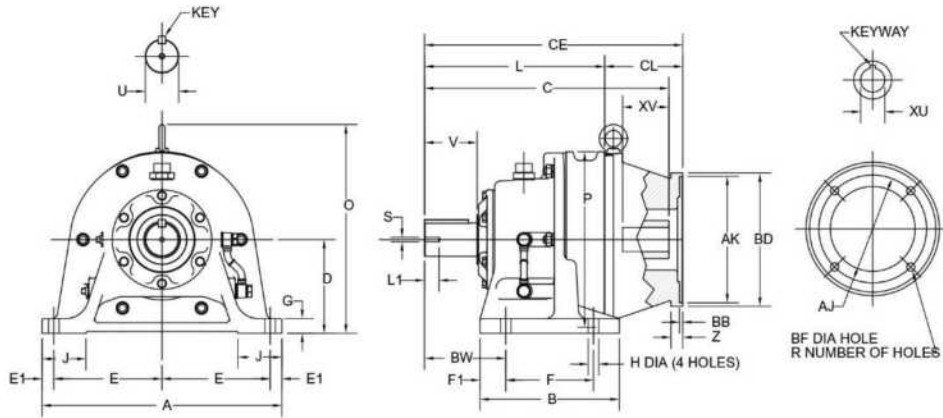
All dimensions are in mm

Model	Motor Frame	AJ	AK	BD	BB	BF	R	CE	CL	C	Z	High Speed Shaft			Approx Wt. (kg)
												XU	XV	Keyway	
CYF105	63	115	95	140	5	10	4	168	76	142	12	11	28	4 X 4	63
	63	115	95	140	5	10	4	174	76	148	12	11	28	4 X 4	63
CYF135	63	115	95	140	5	10	4	208	79	192	12	11	28	4 X 4	63
	71	130	110	160	5	10	4	208	79	192	12	14	40	5 X 5	71
CYF150	71	130	110	160	5	10	4	227	85	201	12	14	40	5 X 5	71
	80	165	130	200	5	12	4	227	85	211	12	19	42	6 X 6	80
CYF150	71	130	110	160	5	10	4	236	80	209	12	14	40	5 X 5	71
	80	165	130	200	5	12	4	236	80	221	12	19	42	6 X 6	80
CYF150	71	130	110	160	5	10	4	236	80	209	12	14	40	5 X 5	71
	80	165	130	200	5	12	4	236	80	221	12	19	42	6 X 6	80
CYF162	71	130	110	160	5	10	4	253	83	236	12	14	40	5 X 5	71
	80	165	130	200	5	12	4	253	83	236	12	19	42	6 X 6	80
	90	165	130	200	5	12	4	272	102	244	18	24	47	8 X 7	90

Dimensions for Foot Mount Hollow Input Single Stage Reducer



CYF Series



Model	A	B	L	D	E	E1	F	F1	G	H	J	O	P	BW
CYF205	230	155	186	120	95	20	115	20	15	14	55	257	204	82
CYF205	230	155	186	140	95	20	115	20	15	14	60	277	204	82
CYF230	330	195	240	150	145	20	145	25	22	18	65	300	230	100
CYF230	330	195	259	150	145	20	145	25	22	18	65	300	230	120
CYF230	330	195	259	160	145	20	145	25	22	18	70	310	230	120
CYF318	410	238	308	200	185	20	150	44	25	18	75	367	318	139
CYF318	410	238	308	200	185	20	150	44	25	18	80	407	318	139

Model	Low Speed Shaft				
	U*	V	S	L1	Key
CYF205	40	55	M8 X 1.25	20	10X 8 X 45
CYF205	40	55	M8 X 1.25	20	10X 8 X 45
CYF230	50	70	M10 X 1.5	18	14 X 9 X 55
CYF230	50	90	M10 X 1.5	18	14 X 9 X 75
CYF230	50	90	M10 X 1.5	18	14 X 9 X 75
CYF318	60	90	M10 x 1.5	18	14 x 9 x 75
CYF318	60	90	M10 x 1.5	18	14 x 9 x 75

Model	Motor Frame	AJ	AK	BD	BB	BF	R	CE	CL	C	Z	XU	High Speed Shaft Keyway	Approx.Wt. (kg)	
		XV													
CYF205	80	165	130	200	5	12	4	287	101	260	12	19	42	6 X 6	27
	90	165	130	200	5	12	4	287	101	265	12	24	47	8 X 7	27
	100	215	180	250	6	14	4	316	130	293	17	28	63	8 X 7	29
	112	215	180	250	6	14	4	316	130	296	17	28	63	8 X 7	29
CYF205	90	165	130	200	5	12	4	287	101	260	12	24	47	8 X 7	28
	100	215	180	250	6	14	4	287	101	265	12	28	63	8 X 7	28
	112	215	180	250	6	14	4	316	130	293	17	28	63	8 X 7	30
	132	265	230	300	6	14	4	316	130	296	17	38	67	12 X 8	30

Dimensions for Foot Mount

Hollow Input Single Stage Reducer



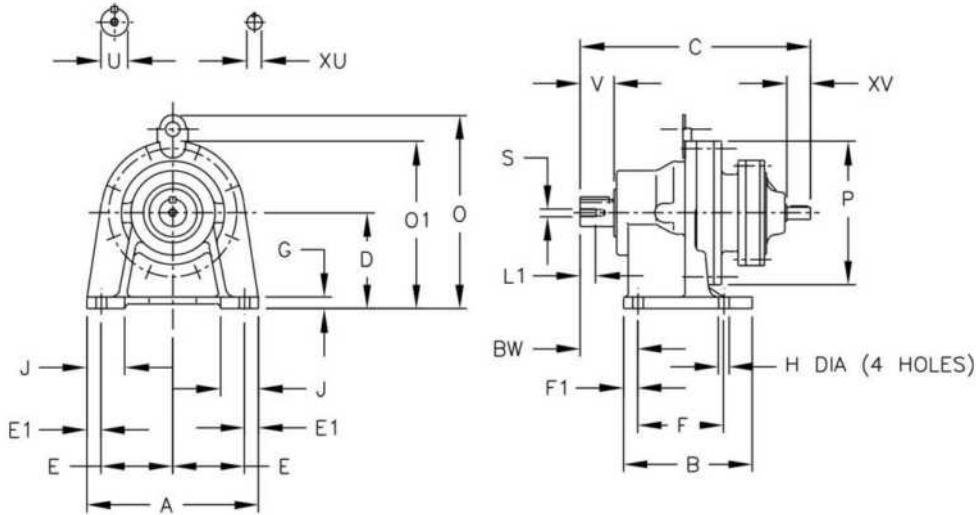
All dimensions are in mm

Model	Motor Frame	AJ	AK	BD	BB	BF	R	CE	CL	C	Z	XU	High Speed Shaft XV	Shaft Keyway	Approx Wt.(kg)
CYF230	90	165	130	200	5	12	4	343	103	329	12	24	47	8 X 7	47
	100	215	180	250	6	14	4	392	151	366	17	28	63	8 X 7	50
	112	215	180	250	6	14	4	392	151	357	17	28	63	8 X 7	50
	132	265	230	300	6	14	4	392	151	365	17	38	67	12 X 8	50
CYF230	90	165	130	200	5	12	4	363	103	349	12	24	47	8 X 7	48
	100	215	180	250	6	14	4	412	151	386	17	28	63	8 X 7	51
	112	215	180	250	6	14	4	412	151	377	17	28	63	8 X 7	51
	132	265	230	300	6	14	4	412	151	385	17	38	67	12 X 8	51
CYF230	100	215	180	250	6	14	4	363	103	349	12	28	63	8 X 7	50
	112	215	180	250	6	14	4	412	151	386	17	28	63	8 X 7	53
	132	265	230	300	6	14	4	412	151	377	17	38	67	12 X 8	53
	160	300	250	350	6	18	4	412	151	385	17	42	76	12 X 8	53
CYF318	100	215	180	250	6	14	4	441	134	418	20	28	63	8 X 7	86
	112	215	180	250	6	14	4	441	134	418	20	28	63	8 X 7	87
	132	265	230	300	6	14	4	441	134	418	20	38	67	12 X 8	87
CYF318	112	215	180	250	6	14	4	441	134	418	20	28	63	8 X 7	91
	132	265	230	300	6	14	4	441	134	418	20	38	67	12 X 8	92
	160	300	250	350	6	18	4	441	134	418	20	42	76	12 X 8	92

Dimensions for Foot Mount

Hollow Input, Double Stage Reducer

CYF Series



All dimensions are in mm

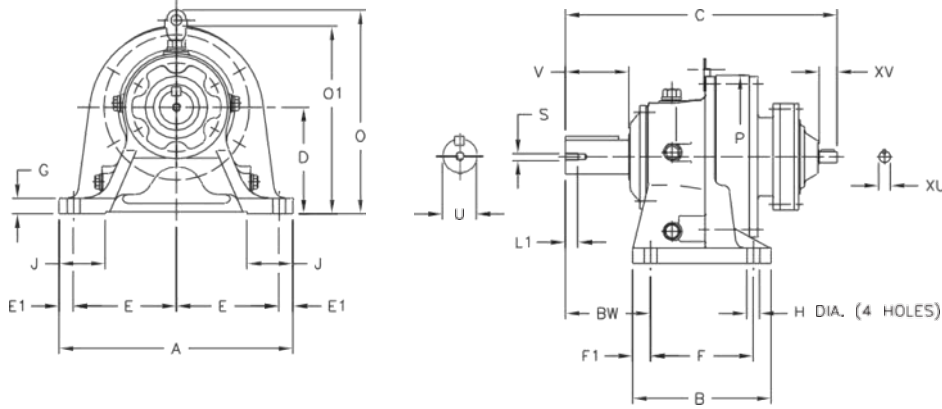
Model	U*	V	Low Speed Shaft S	L1	Key	XU*	High Speed Shaft XV	Key	Approx. Wt.(kg.)
CYF105	12	25	M6 x 1	16	4 x 4 x 20	12	25	4 x 4 x 18	4
CYF105	19	30	M6 x 1	16	5 x 5 x 27	12	25	4 x 4 x 18	5
CYF150	30	35	M8 x 1.25	20	6 x 6 x 30	16	25	5 x 5 x 20	12
CYF150	30	35	M8 x 1.25	20	6 x 6 x 30	16	25	5 x 5 x 20	15
CYF205	40	55	M8 x 1.25	20	10 x 8 x 45	19	25	5 x 5 x 25	29

Model	A	B	C	D	E	E1	F	F1	G	H	J	O1	O	P	BW
CYF105	144	84	178	80	60	12	60	12	10	9	35	135	-	105	41
CYF105	144	84	184	80	60	12	60	12	10	9	35	135	-	105	47
CYF150	180	135	243	100	75	15	90	15	12	11	40	175	-	150	60
CYF150	180	135	257	100	75	15	90	15	12	11	40	-	207	150	60
CYF205	230	155	312	120	95	20	115	20	15	14	55	-	257	205	82

Dimensions for Foot Mount

Hollow Input, Double Stage Reducer

CYF Series



All dimensions are in mm

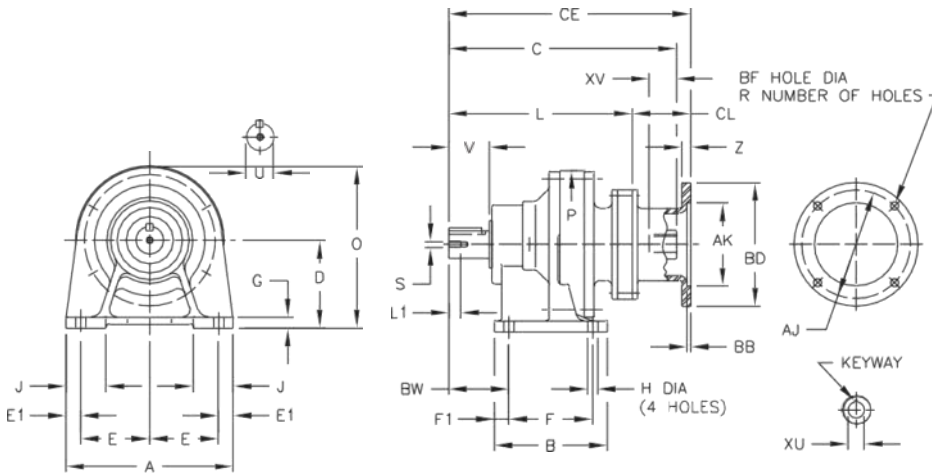
Model	A	B	C	D	E	E1	F	F1	G	H	J	O1	O	P	BW
CYF230	330	195	347	150	145	20	145	25	22	18	65	-	300	230	100
CYF230	330	195	363	150	145	20	145	25	22	18	65	-	300	230	100
CYF230	330	195	369	150	145	20	145	25	22	18	65	-	300	230	100
CYF230	330	195	367	150	145	20	145	25	22	18	65	-	300	230	120
CYF230	330	195	383	150	145	20	145	25	22	18	65	-	300	230	120
CYF230	330	195	389	150	145	20	145	25	22	18	65	-	300	230	120

Model	U*	V	Low Speed Shaft S	L1	Key	XU*	High Speed Shaft XV	Key	Approx. Wt.(kg.)
CYF230	50	70	M10 x 1.5	18	14 x 9 x 55	22	40	5 x 5 x 35	41
CYF230	50	90	M10 x 1.5	18	14 x 9 x 75	22	40	5 x 5 x 35	45
CYF230	50	90	M10 x 1.5	18	14 x 9 x 75	22	40	5 x 5 x 35	45
CYF230	50	90	M10 x 1.5	18	14 x 9 x 75	22	40	5 x 5 x 35	41
CYF230	50	90	M10 x 1.5	18	14 x 9 x 75	22	40	5 x 5 x 35	45
CYF230	50	90	M10 x 1.5	18	14 x 9 x 75	22	40	5 x 5 x 35	45

Dimensions for Foot Mount

Hollow Input , Double Stage Reducer

CYF Series



All dimensions are in mm

Model	A	B	L	D	E	E1	F	F1	G	H	J	O	P	BW
CYF105	144	84	125	80	60	12	60	12	10	9	35	135	105	41
CYF105	144	84	131	80	60	12	60	12	10	9	35	135	105	47
CYF150	180	135	190	100	75	15	90	15	12	11	40	175	150	60
CYF205	180	135	204	100	75	15	90	15	12	11	40	175	150	60
CYF230	230	155	252	120	95	20	115	20	15	14	55	222	205	82
CYF230	330	195	294	150	145	20	145	25	22	18	65	300	230	100
CYF230	330	195	303	150	145	20	145	25	22	18	65	300	230	100
CYF230	330	195	317	150	145	20	145	25	22	18	65	300	230	100
CYF230	330	195	314	150	145	20	145	25	22	18	65	300	230	120
CYF230	330	195	323	150	145	20	145	25	22	18	65	300	230	120
CYF230	330	195	337	150	145	20	145	25	22	18	65	300	230	120

Model	U*	V	Low Speed Shaft S	L1	Key
CYF105	12	25	M6 x 1	16	4 x 4 x 20
CYF105	20	30	M6 x 1	16	5 x 5 x 27
CYF150	30	35	M8 x 1.25	20	6 x 6 x 30
CYF205	40	35	M8 x 1.25	20	10 x 8 x 45
CYF230	50	55	M10 x 1.5	18	14 x 9 x 75
CYF230	50	70	M10 x 1.5	18	14 x 9 x 75
CYF230	50	70	M10 x 1.5	18	14 x 9 x 75
CYF230	50	70	M10 x 1.5	18	14 x 9 x 75
CYF230	50	90	M10 x 1.5	18	14 x 9 x 75
CYF230	50	90	M10 x 1.5	18	14 x 9 x 75
CYF230	50	90	M10 x 1.5	18	14 x 9 x 75

Dimensions for Foot Mount

Hollow Input, Double Stage Reducer



All dimensions are in mm

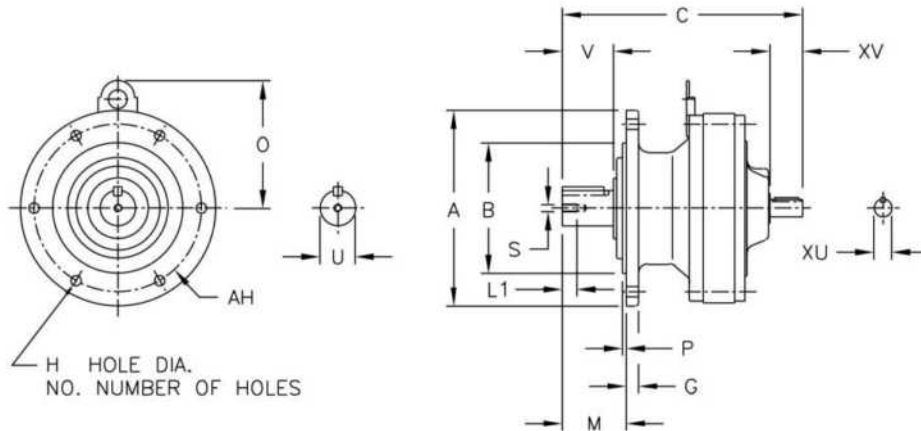
Model	Motor Frame	AJ	AK	BD	BB	BF	R	CE	CL	C	Z	XU	High Speed Shaft		Approx Wt.(kg)
													XV	Keyway	
CYF105	63	115	95	140	5	10	4	201	76	175	12	11	28	4 x 4	6
CYF105	63	115	95	140	5	10	4	207	76	181	12	11	28	4 x 4	6
CYF150	71	130	110	160	5	10	4	266	76	240	12	14	40	5 x 5	14
CYF205	71	130	110	160	5	10	4	280	76	254	12	14	40	5 x 5	17
CYF230	63	115	95	140	5	10	4	337	85	311	12	11	28	4 x 4	31
	71	130	110	160	5	10	4	337	85	321	12	14	40	5 x 5	31
CYF230	63	115	95	140	-	10	4	370	76	344	12	11	28	4 x 4	43
CYF230	63	115	95	140	-	10	4	388	85	366	12	11	28	4 x 4	47
	71	130	110	160	-	10	4	388	85	372	12	14	40	5 x 5	47
CYF230	63	115	95	140	5	10	4	397	80	370	12	11	28	4 x 4	45
	71	130	110	160	5	10	4	397	80	382	12	14	40	5 x 5	48
CYF230	63	115	95	140		10	4	390	76	364	12	11	28	4 x 4	43
CYF230	63	115	95	140	5	10	4	408	85	386	12	11	28	4 x 4	47
	71	130	110	160	5	10	4	408	85	392	12	14	40	5 x 5	47
CYF230	63	115	95	140		10	4	417	80	390	12	11	28	4 x 4	45
	71	130	110	160		10	4	417	80	402	12	14	40	5 x 5	48

Model	Low Speed Shaft					High Speed Shaft			Approx Wt. (kg.)
	U	V	S	L1	KEY	XY	XV	KEY	
CYF105	12	25	M6 x 1	16	4 x 4 x 20	12	25	4 x 4 x 18	2
CYF105	19	30	M6 x 1	16	5 x 5 x 27	12	25	4 x 4 x 18	2
CYF135	25	35	M6 x 1	16	5 x 5 x 30	12	25	4 x 4 x 18	8
CYF150	30	35	M8 x 1.25	20	6 x 6 x 30	16	25	5 x 5 x 20	11
CYF150	30	35	M8 x 1.25	20	6 x 6 x 30	16	25	5 x 5 x 20	13
CYF150	30	35	M8 x 1.25	20	6 x 6 x 30	16	25	5 x 5 x 20	14
CYF162	35	45	M8 x 1.25	20	6 x 6 x 38	16	25	5 x 5 x 20	15
CYF205	40	55	M8 x 1.25	20	10 x 8 x 45	19	35	5 x 5 x 25	24
CYF205	40	55	M8 x 1.25	20	10 x 8 x 45	19	35	5 x 5 x 25	25

Dimensions for Flange Mount

Single Stage Reducer

CYL Series



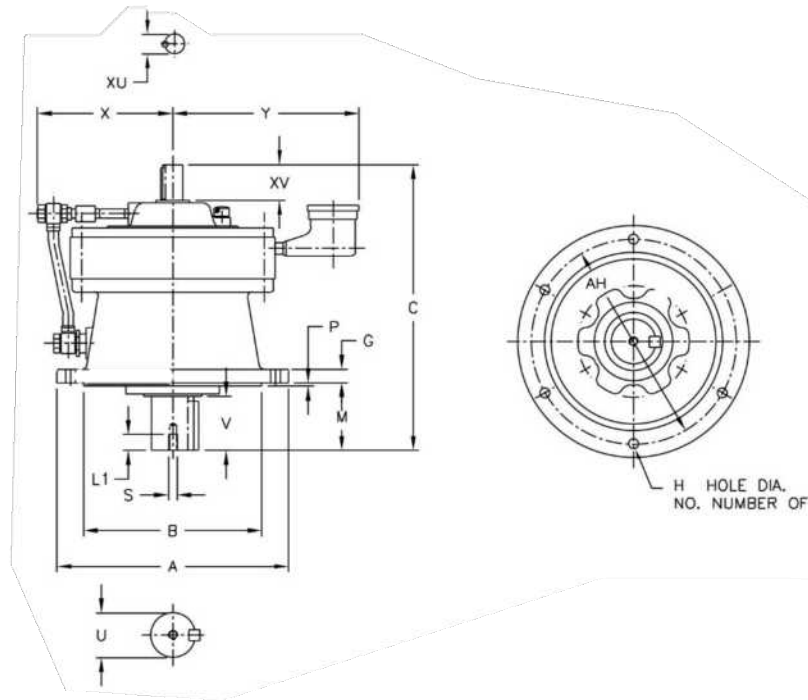
Model	A	B	C	G	H	NO.	M	O	P	AH
CYL105	120	80	145	8	9	152	34	-	3	102
CYL105	160	110	151	9	11	102	42	-	3	134
CYL135	160	110	179	9	11	102	48	-	3	134
CYL150	160	110	202	9	11	102	48	107	3	134
CYL150	160	110	208	9	11	102	48	107	3	134
CYL162	210	140	218	11	11	152	58	116	4	180
CYL205	210	140	259	13	11	152	69	137	4	180

Model	U*	V	Low Speed Shaft S	L1	Key	XU*	High Speed Shaft XV	Key	Approx. Wt. (KG)
CYL105	12	25	M6 x 1	16	4 x 4 x 20	12	25	4 x 4 x 18	4
CYL105	19	30	M6 x 1	16	5 x 5 x 27	12	25	4 x 4 x 18	5
CYL135	25	35	M6 x 1	16	5 x 5 x 30	12	25	4 x 4 x 18	8
CYL150	30	35	M8 x 1.25	20	6 x 6 x 30	16	25	5 x 5 x 20	9
CYL150	30	35	M8 x 1.25	20	6 x 6 x 30	16	25	5 x 5 x 20	11
CYL162	40	45	M8 x 1.25	20	10 x 8 x 45	19	35	5 x 5 x 25	13
CYL205	40	55	M8 x 1.25	20	10 x 8 x 45	19	35	5 x 5 x 25	23

Dimensions for Flange Mount



CYL Series



All dimensions are in mm

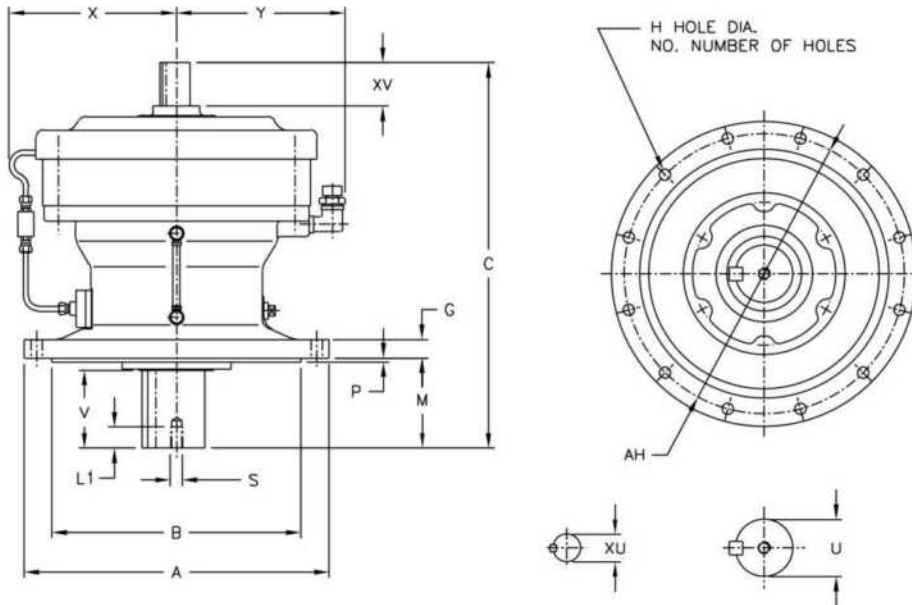
Model	A	B	C	G	H	NO.	M	P	AH	X	Y
CYL230	260	200	321	15	11	152	76	4	230	152	233
CYL230	260	200	341	15	11	152	96	4	230	152	233

Model	Low Speed Shaft					High Speed Shaft XV			Approx. Wt.(kg.)
	U*	V	S	L1	Key	XU*	Key		
CYL230	50	70	M10 x 1.5	18	14 x 9 x 55	22	40	5 x 5 x 35	42
CYL230	50	70	M10 x 1.5	18	14 x 9 x 55	22	40	5 x 5 x 35	43

Dimensions for Flange Mount



CYL Series



All dimensions are in mm

Model	A	B	C	G	H	NO.	M	P	AH	X	Y
CYL318	340	270	413	20	11	152	89	4	310	217	200
CYL362	400	316	477	22	14	203	94	5	360	222	225
CYL390	430	345	527	22	18	203	110	5	390	237	240
CYL451	490	400	620	30	18	305	145	6	450	265	270
CYL471	455	355	678	30	22	203	204	5	405	341	287
CYL507	490	390	708	35	24	203	203	7	440	348	306
CYL549	535	415	752	35	27	203	210	10	475	352	326
CYL591	570	450	839	40	27	203	250	10	510	359	344
CYL637	635	485	877	40	33	203	250	10	560	370	371
CYL703	685	535	1040	45	33	203	295	10	610	426	399
CYL772	750	570	1150	50	39	203	360	10	660	460	431
CYL986	1160	900	1462	60	39	203	355	10	1020	610	613

Dimensions for Flange Mount Single Reduction



CYL Series

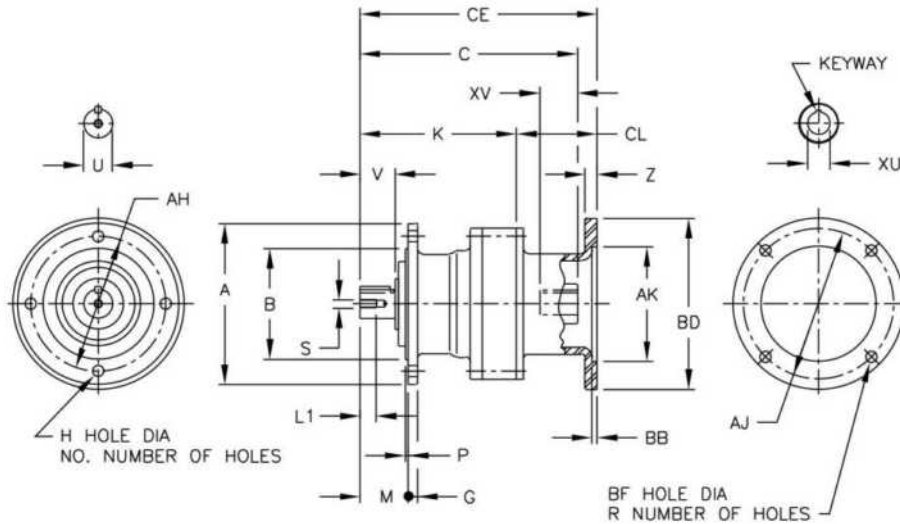
All dimensions are in mm

Model	U*	V	Low Speed Shaft S	L1	Key	XU*	High Speed Shaft XV	Key	Approx. Wt.(kg.)
CYL318	60	90	M10 x 1.5	18	14 x 9 x 75	30	45	6 x 6 x 45	78
CYL362	70	90	M12 x 1.75	24	20 x 12 x 80	35	55	10 x 8 x 55	124
CYL390	80	110	M12 x 1.75	24	22 x 14 x 95	38	65	12 x 8 x 65	149
CYL451	92	135	M16 x 2	34	25x 14 x 125	45	70	12 x 8 x 70	223
CYL471	100	165	M16 x 2	34	28 x 16 x 165	45	82	12 x 8 x 80	241
CYL507	108	165	M16 x 2	34	28 x 16 x 165	48	82	14 x 9 x 80	311
CYL549	118	165	M16 x 2	34	32 x 18 x 165	54	82	14 x 9 x 80	393
CYL591	127	200	M20 x 2.5	40	32 x 18 x 200	60	105	14 x 9 x 105	470
CYL637	140	200	M20 x 2.5	40	32 x 18 x 200	65	105	20 x 12 x 105	563
CYL703	160	240	M24 x 3	50	40 x 22 x 240	80	130	22 x 14 x 130	858
CYL772	170	300	M24 x 3	50	45 x 25 x 300	80	130	22 x 14 x 130	1116
CYL986	180	330	M24 x 3	52	45 x 25 x 330	90	150	25 x 14 x 150	2590

Dimensions for Flange Mount Single Reduction, Hollow Input



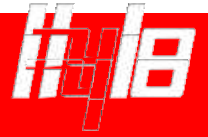
CYL Series



Model	A	B	G	H	K	NO.	M	P	AH
CYL105	120	80	8	9	92	152	34	3	102
CYL105	160	110	9	11	98	102	42	3	134
CYL135	160	110	9	11	129	102	48	3	134
CYL150	160	110	9	11	142	102	48	3	134
CYL150	160	110	9	11	156	102	48	3	134
CYL162	210	140	11	11	170	152	58	4	180
CYL205	210	140	13	11	186	152	69	4	180

Model	U*	V	Low Speed Shaft S	L1	Key
CYL105	12	25	M6 x 1	16	4 x 4 x 20
CYL105	20	30	M6 x 1	16	5 x 5 x 27
CYL135	25	35	M6 x 1	16	6 x 6 x 30
CYL150	30	35	M8 x 1.25	20	6 x 6 x 30
CYL150	30	35	M8 x 1.25	20	6 x 6 x 30
CYL162	35	45	M8 x 1.25	20	6 x 6 x 38
CYL205	40	55	M8 X 1.25	20	10X 8 X 45

Dimensions for Flange Mount Single Reduction, Hollow Input CYL Series



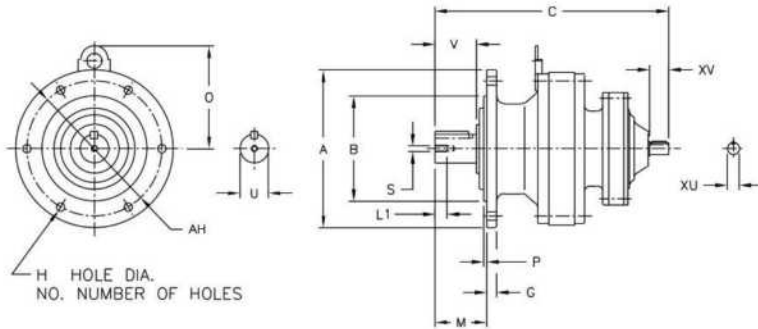
All dimensions are in mm

Model	Motor Frame	AJ	AK	BD	BB	BF	R	CE	CL	C	Z	High Speed Shaft			Approx Wt.(kg)
												XU	XV	Keyway	
CYL105	63	115	95	140	5	10	4	168	76	142	12	11	28	4 X 4	5
	63	115	95	140	5	10	4	174	76	148	12	11	28	4 X 4	6
CYL135	63	115	95	140	5	10	4	208	79	192	12	11	28	4 X 4	12
	71	130	110	160	5	10	4	208	79	192	12	14	40	5 X 5	12
CYL150	71	130	110	160	5	10	4	227	85	201	12	14	40	5 X 5	11
	80	165	130	200	5	12	4	227	85	211	12	19	42	6 X 6	11
CYL150	71	130	110	160	5	10	4	236	80	209	12	14	40	5 X 5	13
	80	165	130	200	5	12	4	236	80	221	12	19	42	6 X 6	13
CYL162	71	130	110	160	5	10	4	253	83	236	12	14	40	5 X 5	16
	80	165	130	200	5	12	4	253	83	236	12	19	42	6 X 6	16
	90	165	130	200	5	12	4	272	102	244	18	24	47	8 X 7	18
CYL205	80	165	130	200	5	12	4	287	101	260	12	19	42	6 X 6	27
	90	165	130	200	5	12	4	287	101	265	12	24	47	8 X 7	27
	100	215	180	250	6	14	4	316	130	293	17	28	63	8 X 7	28
	112	215	180	250	6	14	4	316	130	296	17	28	63	8 X 7	28

Dimensions for Flange Mount Double Reduction, Hollow Input



CYL Series



All dimensions are in mm

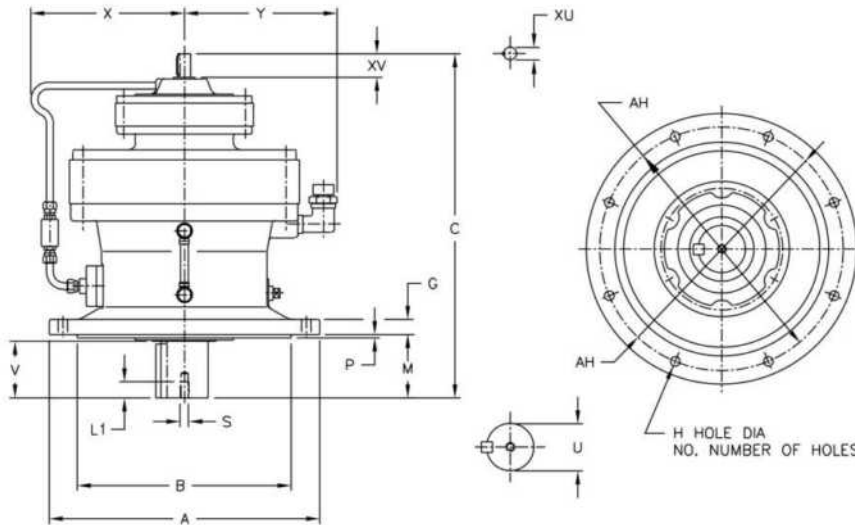
Model	A	B	C	G	H	NO.	M	O	P	AH
CYL105	120	80	178	8	9	152	34	-	3	102
CYL105	160	110	184	9	11	102	42	-	3	134
CYL150	160	110	243	9	11	102	48	107	3	134
CYL150	160	110	257	9	11	102	48	107	3	134
CYL205	210	140	312	13	11	152	69	137	4	180

Model	U*	V	Low Speed Shaft S	L1	Key	XU*	High Speed Shaft XV	Key	Approx. Wt.(kg.)
CYL105	12	25	M6 x 1	16	4 x 4 x 20	12	25	4 x 4 x 18	5
CYL105	19	30	M6 x 1	16	5 x 5 x 27	12	25	4 x 4 x 18	7
CYL150	30	35	M8 x 1.25	20	6 x 6 x 30	16	25	5 x 5 x 20	11
CYL150	30	35	M8 x 1.25	20	6 x 6 x 30	16	25	5 x 5 x 20	13
CYL205	40	55	M8 x 1.25	20	10 x 8 x 45	19	25	5 x 5 x 25	29

Dimensions for Flange Mount Double Reduction, Hollow Input



CYL Series



Model	A	B	C	G	H	NO.	M	P	AH	X	Y
CYL230	260	200	347	15	11	152	76	4	230	-	-
CYL230	260	200	363	15	11	152	76	4	230	-	-
CYL230	260	200	369	15	11	152	76	4	230	-	-
CYL230	260	200	367	15	11	152	96	4	230	-	-
CYL230	260	200	383	15	11	152	96	4	230	-	-
CYL230	260	200	389	15	11	152	96	4	230	-	-
CYL318	340	270	462	20	11	152	89	4	310	196	200
CYL362	400	316	509	22	14	203	94	5	360	218	225
CYL390	430	345	577	22	18	203	110	5	390	233	240
CYL451	490	400	629	30	18	305	145	6	450	255	270
CYL451	490	400	653	30	18	305	145	6	450	255	270
CYL471	455	355	670	30	22	203	204	5	405	341	287
CYL471	455	355	705	30	22	203	204	5	405	341	287
CYL507	490	390	731	35	24	203	203	7	440	348	306
CYL507	490	390	780	35	24	203	203	7	440	348	306
CYL549	535	415	773	35	27	203	210	10	475	352	326
CY549	535	415	860	35	27	203	210	10	475	352	326
CYL591	570	450	883	40	27	203	250	10	510	359	344
CYL591	570	450	938	40	27	203	250	10	510	359	344

Dimensions for Flange Mount Double Reduction, Hollow Input



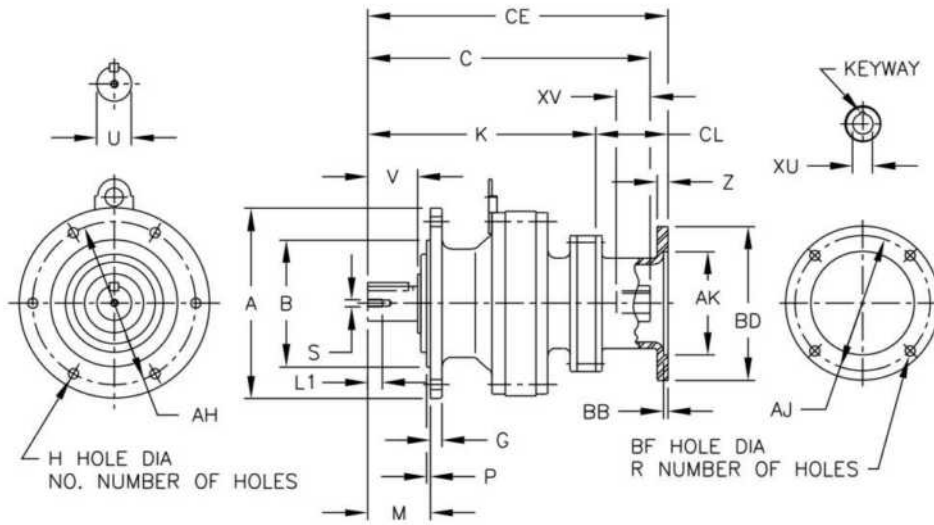
CYL Series

All dimensions are in mm

Model	A	B	C	G	H	NO.	M	P	AH	X	Y
CYL637	635	485	921	40	33	203	250	10	560	370	371
CYL637	635	485	975	40	33	203	250	10	560	370	371
CYL703	685	535	1081	45	33	203	295	10	610	395	399
CYL703	685	535	1133	45	33	203	295	10	610	395	399
CYL772	750	570	1243	50	39	203	360	10	660	427	431
CYL986	1160	900	1504	60	39	203	355	10	1020	610	613

Model	U*	V	Low Speed Shaft S	L1	Key	XU*	High Speed Shaft XV	Key	Approx. Wt. (kg)
CYL230	50	70	M10 x 1.5	18	14 x 9 x 55	22	40	5 x 5 x 35	40
CYL230	50	70	M10 x 1.5	18	14 x 9 x 55	22	40	5 x 5 x 35	43
CYL230	50	70	M10 x 1.5	18	14 x 9 x 55	22	40	5 x 5 x 35	44
CYL230	50	90	M10 x 1.5	18	14 x 9 x 75	22	40	5 x 5 x 35	40
CYL230	50	90	M10 x 1.5	18	14 x 9 x 75	22	40	5 x 5 x 35	43
CYL230	50	90	M10 x 1.5	18	14 x 9 x 75	22	40	5 x 5 x 35	44
CYL318	60	90	M10 x 1.5	18	14 x 9 x 75	30	45	6 x 6 x 45	89
CYL362	70	90	M12 x 1.75	24	20 x 12 x 80	35	55	10 x 8 x 55	124
CYL390	80	110	M12 x 1.75	24	22 x 14 x 95	38	65	12 x 8 x 65	170
CYL451	92	135	M16 x 2	34	25x 14 x 125	45	70	12 x 8 x 70	227
CYL451	92	135	M16 x 2	34	25x 14 x 125	45	70	12 x 8 x 70	238
CYL471	100	165	M16 x 2	34	28 x 16 x 165	45	82	12 x 8 x 80	244
CYL471	100	165	M16 x 2	34	28 x 16 x 165	45	82	12 x 8 x 80	256
CYL507	108	165	M16 x 2	34	28 x 16 x 165	48	82	14 x 9 x 80	330
CYL507	108	165	M16 x 2	34	28 x 16 x 165	48	82	14 x 9 x 80	352
CYL549	118	165	M16 x 2	34	32 x 18 x 165	54	82	14 x 9 x 80	405
CYL549	118	165	M16 x 2	34	32 x 18 x 165	54	82	14 x 9 x 80	451
CYL591	127	200	M20 x 2.5	40	32 x 18 x 200	60	105	14 x 9 x 105	506
CYL591	127	200	M20 x 2.5	40	32 x 18 x 200	60	105	14 x 9 x 105	540
CYL637	140	200	M20 x 2.5	40	32 x 18 x 200	65	105	20 x 12 x 105	599
CYL637	140	200	M20 x 2.5	40	32 x 18 x 200	65	105	20 x 12 x 105	628
CYL703	160	240	M24 x 3	50	40 x 22 x 240	80	130	22 x 14 x 130	918
CYL703	160	240	M24 x 3	50	40 x 22 x 240	80	130	22 x 14 x 130	986
CYL772	170	300	M24 x 3	50	45 x 25 x 300	80	130	22 x 14 x 130	1255
CYL986	180	330	M24 x 3	52	45 x 25 x 330	90	150	25 x 14 x 150	2639

Dimensions for Flange Mount Double Reduction, Hollow Input CYL Series



All dimensions are in mm

Model	A	B	G	H	K	NO.	M	P	AH
CYL105	120	80	8	9	91	152	34	3	102
CYL150	160	110	9	11	89	102	42	3	134
CYL150	160	110	9	11	190	102	48	3	134
CYL150	160	110	9	11	156	102	48	3	134
CYL205	210	140	13	11	183	152	69	4	180
CYL230	260	199	15	11	294	152	76	4	230
CYL230	260	199	15	11	303	152	76	4	230
CYL230	260	199	15	11	241	152	76	4	230
CYL230	260	199	15	11	314	152	96	4	230
CYL230	260	199	15	11	227	152	96	4	230
CYL230	260	199	15	11	337	152	96	4	230

Dimensions for Flange Mount Double Reduction, Hollow Input CYL Series



All dimensions are in mm

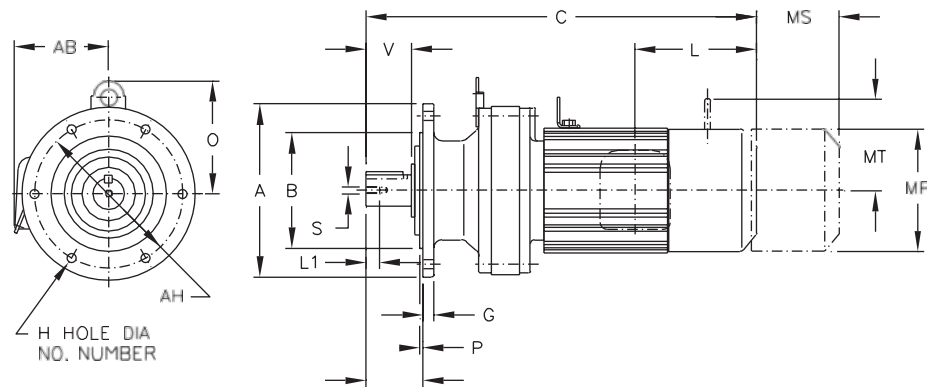
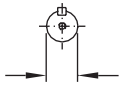
Model	Low Speed Shaft				
	U*	V	S	L1	Key
CYL105	12	25	M6 x 1	16	4 x 4 x 20
CYL150	30	35	M8 x 1.25	20	6 x 6 x 30
CYL150	30	35	M8 x 1.25	20	6 x 6 x 30
CYL150	30	35	M8 x 1.25	20	6 x 6 x 30
CYL205	40	55	M8 X 1.25	20	10X 8 X 45
CYL230	50	70	M10 X 1.5	18	14 X 9 X 55
CYL230	50	90	M10 X 1.5	18	14 X 9 X 75
CYL230	50	90	M10 X 1.5	18	14 X 9 X 75
CYL230	50	90	M10 X 1.5	18	14 X 9 X 75
CYL230	50	90	M10 X 1.5	18	14 X 9 X 75
CYL230	50	90	M10 X 1.5	18	14 X 9 X 75

Model	Motor Frame											XU	High Speed Shaft		Approx Wt.(kg)
		AJ	AK	BD	BB	BF	R	CE	CL	C	Z		XV	Keyway	
CYL105	63	115	95	140	5	10	4	201	76	185	12	11	28	4 X 4	7
CYL150	71	130	110	160	5	10	4	207	76	181	12	14	40	5 X 5	9
CYL150	80	165	130	200	5	12	4	266	76	240	12	19	42	6 X 6	12
CYL150	80	165	130	200	5	12	4	280	76	254	12	19	42	6 X 6	15
	90	165	130	200	5	12	4	337	85	311	12	24	47	8 X 7	31
CYL205	100	215	180	250	6	14	4	337	85	321	12	28	63	8 X 7	31
CYL230	90	165	130	200	-	12	4	370	76	344	12	24	47	8 X 7	42
	90	165	130	200	-	12	4	388	85	366	12	24	47	8 X 7	45
CYL230	100	215	180	250	-	14	4	388	85	372	12	28	63	8 X 7	45
	90	165	130	200	6	12	4	397	80	370	12	24	47	8 X 7	45
CYL230	100	215	180	250	6	14	4	397	80	382	12	28	63	8 X 7	45
CYL230	90	165	130	200	-	12	4	390	76	364	12	24	47	8 X 7	42
	90	165	130	200	6	12	4	408	85	382	12	24	47	8 X 7	45
CYL230	100	215	180	250	6	14	4	408	85	392	12	28	63	8 X 7	45
	90	165	130	200	-	12	4	417	80	390	12	24	47	8 X 7	45
CYL230	100	215	180	250	-	14	4	417	80	402	12	28	63	8 X 7	46

Dimensions for Flange Mount Single Reduction



CYL_GM Series



All dimensions are in mm

Model	A	B	G	H	NO.	M	O	P	AH
CYL105GM	120	80	8	9	152	34	-	3	102
CYL105GM	160	110	9	11	102	42	-	3	134
CYL135GM	160	110	9	11	102	48	-	3	134
CYL150GM	160	110	9	11	102	48	107	3	134
CYL150GM	160	110	9	11	102	48	107	3	134
CYL162GM	210	140	11	11	152	58	116	4	180
CYL205GM	210	140	13	11	152	69	137	4	180

Model	U*	V	Low Speed Shaft S	L1	Key
CYL105GM	12	25	M6 x 1	16	4 x 4 x 20
CYL105GM	19	30	M6 x 1	16	5 x 5 x 27
CYL135GM	25	35	M6 x 1	16	5 x 5 x 30
CYL150GM	30	35	M8 x 1.25	20	6 x 6 x 30
CYL150GM	30	35	M8 x 1.25	20	6 x 6 x 30
CYL162GM	35	45	M8 x 1.25	20	6 x 6 x 38
CYL205GM	40	55	M8 x 1.25	20	10 x 8 x 45

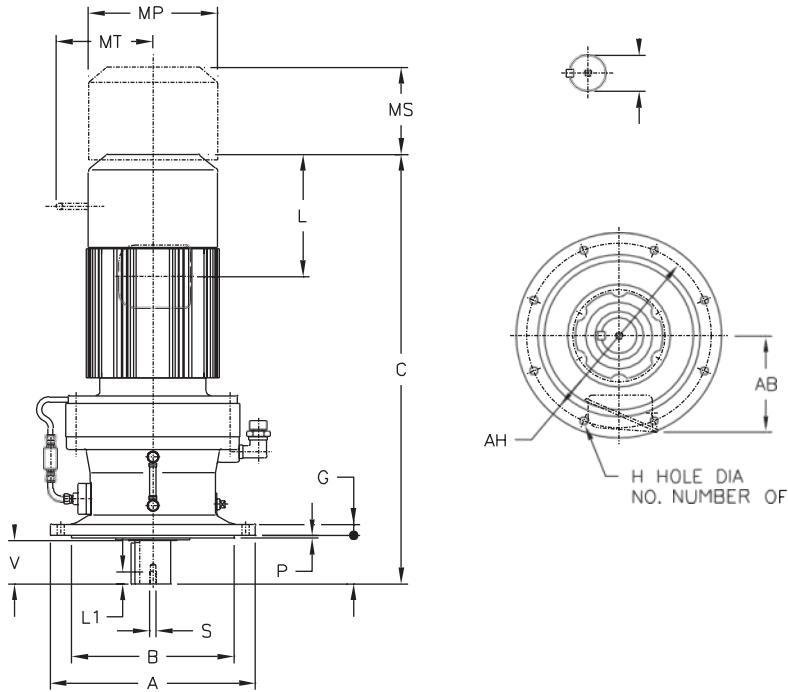
Dimensions for Flange Mount Single Reduction CYL_GM Series



All dimensions are in mm

Model	Motor		C	Without Brake			Appx Wt(kg)	C	AB	With Brake			MS	MT	Appx Wt(KG)
	HP	Pole		AB	L	MP				L	MP				
CYL105GM	1/8	4	226	128	35	119	6	261	128	70	124	49	-	8	
CYL105GM	1/4	4	268	128	59	124	7	300	128	91	124	61	-	9	
CYL105GM	1/3	4	268	128	59	124	8	300	128	91	124	61	-	9	
CYL105GM	1/8	4	232	128	35	119	8	267	128	70	124	49	-	9	
CYL105GM	1/4	4	274	128	59	124	9	306	128	91	124	61	-	10	
CYL105GM	1/3	4	274	128	59	124	9	306	128	91	124	61	-	10	
CYL105GM	1/2	4	294	128	59	124	10	326	128	91	124	61	-	11	
CYL135GM	1/8	4	258	128	35	119	11	293	128	70	124	49	-	12	
CYL135GM	1/4	4	300	128	59	124	12	332	128	91	124	61	-	13	
CYL135GM	1/3	4	300	128	59	124	12	332	128	91	124	61	-	13	
CYL135GM	1/2	4	320	128	59	124	14	352	128	91	124	61	-	15	
CYL135GM	3/4	4	361	138	97	148	18	404	138	140	148	93	106	19	
CYL135GM	1	4	361	138	97	148	18	404	138	140	148	93	106	19	
CYL150GM	1/8	4	276	128	35	119	12	311	128	70	124	49	-	14	
CYL150GM	1/4	4	318	128	59	124	13	350	128	91	124	61	-	15	
CYL150GM	1/3	4	318	128	59	124	13	350	128	91	124	61	-	15	
CYL150GM	1/2	4	338	128	59	124	14	370	128	91	124	61	-	16	
CYL150GM	3/4	4	379	138	97	148	18	422	138	140	148	93	106	21	
CYL150GM	1	4	379	138	97	148	18	422	138	140	148	93	106	21	
CYL150GM	1.5	4	16.22	412	143	100	160	21	474	143	143	162	160	115	114
CYL150GM	2	4	412	143	100	160	21	474	143	162	160	115	114	26	
CYL150GM	1/4	4	332	128	59	124	15	364	128	91	124	61	-	17	
CYL150GM	1/3	4	332	128	59	124	15	364	128	91	124	61	-	17	
CYL150GM	1/2	4	352	128	59	124	16	384	128	91	124	61	-	18	
CYL150GM	3/4	4	393	138	97	148	20	436	138	140	148	93	106	23	
CYL150GM	1	4	393	138	97	148	20	436	138	140	148	93	106	23	
CYL150GM	1.5	4	16.77	426	143	100	160	24	488	143	162	160	115	114	
CYL150GM	2	4	426	143	100	160	24	488	143	162	160	115	114	29	
CYL150GM	3	4	446	150	105	173	28	509	150	168	173	121	124	34	
CYL162GM	1/2	4	363	128	59	124	18	394	128	91	124	61	-	20	
CYL162GM	3/4	4	403	138	97	148	21	452	138	140	148	93	106	24	
CYL162GM	1	4	403	138	97	148	21	452	138	140	148	93	106	24	
CYL162GM	1.5	4	17.17	436	143	100	160	24	493	143	162	160	115	114	
CYL162GM	2	4	436	143	100	160	24	493	143	162	160	115	114	29	
CYL162GM	3	4	456	150	105	173	28	519	150	168	173	121	124	34	
CYL162GM	5	4	491	166	127	212	38	563	166	199	212	132	157	48	
CYL205GM	3/4	4	423	138	97	148	30	466	138	140	148	93	106	33	
CYL205GM	1	4	423	138	97	148	30	466	138	140	148	93	106	33	
CYL205GM	1.5	4	17.95	456	143	100	160	34	518	143	162	160	115	114	
CYL205GM	2	4	456	143	100	160	34	518	143	162	160	115	114	39	
CYL205GM	3	4	476	150	105	173	38	539	150	168	173	121	124	45	
CYL205GM	5	4	499	166	127	212	48	571	166	199	212	132	157	58	

Dimensions for Flange Mount Single Reduction CYL_GM Series



All dimensions are in mm

Model	A	B	G	H	NO.	M	P	AH
CYL230GM	260	200	15	11	152	76	4	230
CYL230GM	260	200	15	11	152	96	4	230
CYL318GM	340	270	20	11	152	89	4	310
CYL362GM	400	316	22	14	203	94	5	360

Model	U *	V	Low Speed Shaft		Key
			S	L1	
CYL230GM	50	70	M10 x 1.5	18	14 x 9 x 55
CYL230GM	50	90	M10 x 1.5	18	14 x 9 x 75
CYL318GM	60	90	M10 x 1.5	18	14 x 9 x 75
CYL362GM	70	90	M12 x 1.75	24	20 x 12 x 80

Dimensions for Flange Mount Single Reduction CYL_GM Series

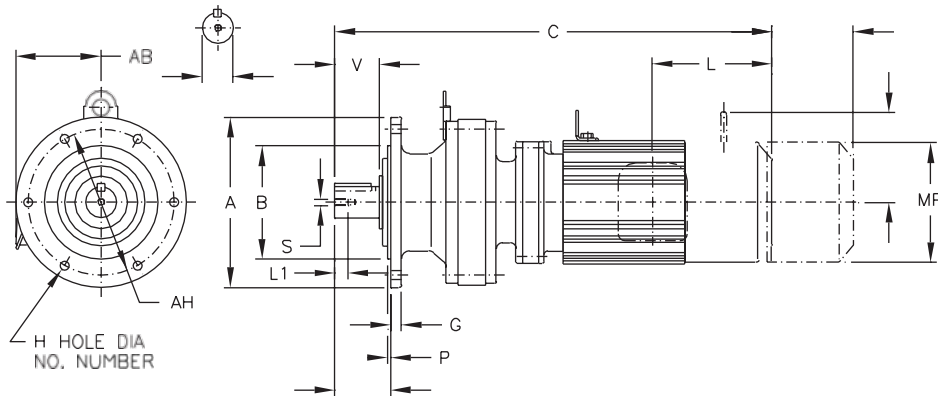


Model	Motor		C	Without Brake			Appx Wt(kg)	C	AB	With Brake			MS	MT	Appx Wt(kg)
	HP	Pole		AB	L	MP				L	MP				
CYL230GM	1	4	477	138	97	148	50	520	138	140	148	93	106	53	
CYL230GM	1.5	4	20.08	510	143	100	160	54	572	143	162	160	115	114	
CYL230GM	2	4	510	143	100	160	54	572	143	162	160	115	114	59	
CYL230GM	3	4	530	150	105	173	57	593	150	168	173	121	124	63	
CYL230GM	5	4	553	166	127	212	67	625	166	199	212	132	157	77	
CYL230GM	1.5	4	20.87	530	143	100	160	54	592	143	162	160	115	114	
CYL230GM	2	4	530	143	100	160	54	592	143	162	160	115	114	59	
CYL230GM	3	4	550	150	105	173	58	613	150	168	173	121	124	64	
CYL230GM	5	4	573	166	127	212	68	645	166	199	212	132	157	77	
CYL318GM	2	4	583	143	100	160	87	645	143	162	160	115	114	92	
CYL318GM	3	4	598	150	105	173	90	661	150	168	173	121	124	96	
CYL318GM	5	4	621	166	127	212	99	693	166	199	212	132	157	109	
CYL362GM	5	4	680	166	127	212	142	752	166	199	212	132	157	152	

Dimensions for Flange Mount Double Reduction



CYL_GM Series



All dimensions are mm

Model	A	B	G	H	NO.	M	O	P	AH
CYL105GM	120	80	8	9	152	34	-	3	102
CYL105GM	160	110	9	11	102	42	-	3	134
CYL150GM	160	110	9	11	102	48	107	3	134
CYL150GM	160	110	9	11	102	48	107	3	134
CYL205GM	210	140	13	11	152	69	137	4	180

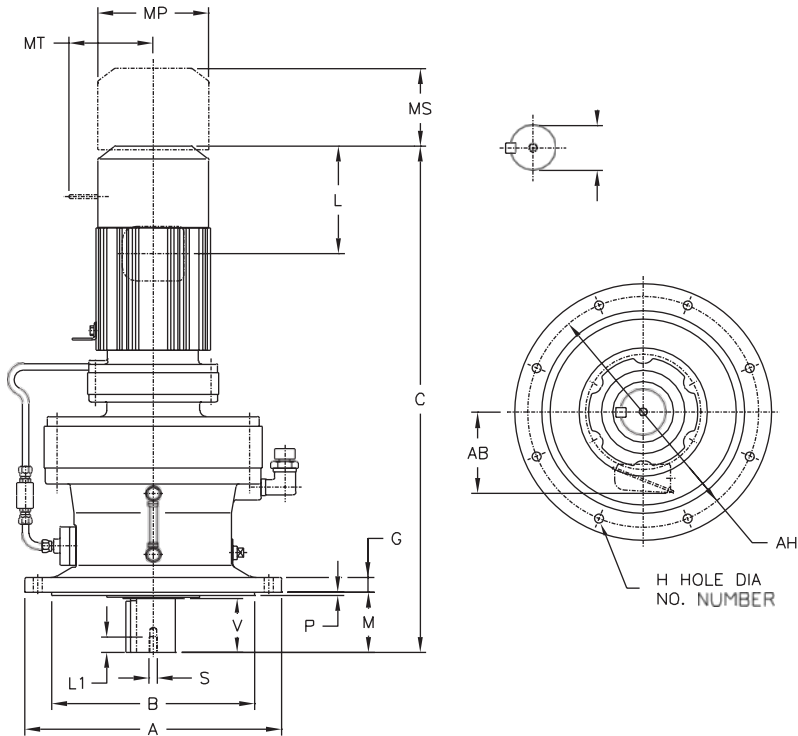
Model	U*	V	Low Speed ShaftS	L1	Key
CYL105GM	12	25	M6 x 1	16	4 x 4 x 20
CYL105GM	19	30	M6 x 1	16	5 x 5 x 27
CYL150GM	30	35	M8 x 1.25	20	6 x 6 x 30
CYL150GM	30	35	M8 x 1.25	20	6 x 6 x 30
CYL205GM	40	55	M8 x 1.25	20	10 x 8 x 45

Model	Motor HP	Motor Pole	C	Without Brake AB	L	MP	Appx Wt(kg)	C	AB	With Brake L	MP	MS	MT	Appx Wt(kg)
CYL105GM	1/8	4	259	128	35	119	8	294	128	70	124	49	-	11
CYL105GM	1/8	4	265	128	35	119	8	300	128	70	124	49	-	11
CYL105GM	1/4	4	307	128	59	124	9	339	128	91	124	61	-	12
CYL150GM	1/8	4	324	128	35	119	15	359	1285	70	124	49	-	16
CYL150GM	1/4	4	366	128	59	124	16	398	128	91	124	61	-	17
CYL150GM	1/3	4	366	128	59	124	16	398	128	91	124	61	-	17
CYL150GM	1/2	4	386	128	59	124	17	418	128	91	124	61	-	18
CYL150GM	1/8	4	338	128	35	119	16	373	128	70	124	49	-	17
CYL150GM	1/4	4	380	128	59	124	17	412	128	91	124	61	-	18
CYL150GM	1/3	4	380	128	59	124	17	412	128	91	124	61	-	18
CYL150GM	1/2	4	400	128	59	124	18	432	128	91	124	61	-	19
CYL205GM	1/8	4	386	128	35	119	31	421	128	70	124	49	-	33
CYL205GM	1/3	4	428	128	59	124	32	473	128	91	124	61	-	34
CYL205GM	1/2	4	448	128	59	124	33	473	128	91	124	61	-	35
CYL205GM	3/4	4	489	138	97	148	37	532	138	140	148	93	106	40
CYL205GM	1	4	489	138	97	148	37	532	138	140	148	93	106	40
CYL205GM	1.5	4	20.31	516	143	100	160	41	578	143	162	160	115	114
CYL205GM	2	4	516	143	100	160	41	578	143	162	160	115	114	45

Dimensions for Flange Mount Double Reduction



CYL_GM Series



All dimensions are mm

Model	A	B	G	H	NO.	M	P	AH
CYL230GM	260	200	15	11	152	76	4	230
CYL230GM	260	200	15	11	152	96	4	230
CYL318GM	340	270	20	11	152	89	4	318
CYL362GM	400	316	22	14	203	94	5	360

Model	Low Speed Shaft				
	U *	V	S	L1	Key
CYL230GM	50	70	M10 x 1.5	18	14 x 9 x 55
CYL230GM	50	90	M10 x 1.5	18	14 x 9 x 75
CYL318GM	60	90	M10 x 1.5	18	14 x 9 x 75
CYL362GM	70	90	M12 x 1.75	24	20 x 12 x 80

Dimensions for Flange Mount Double Reduction

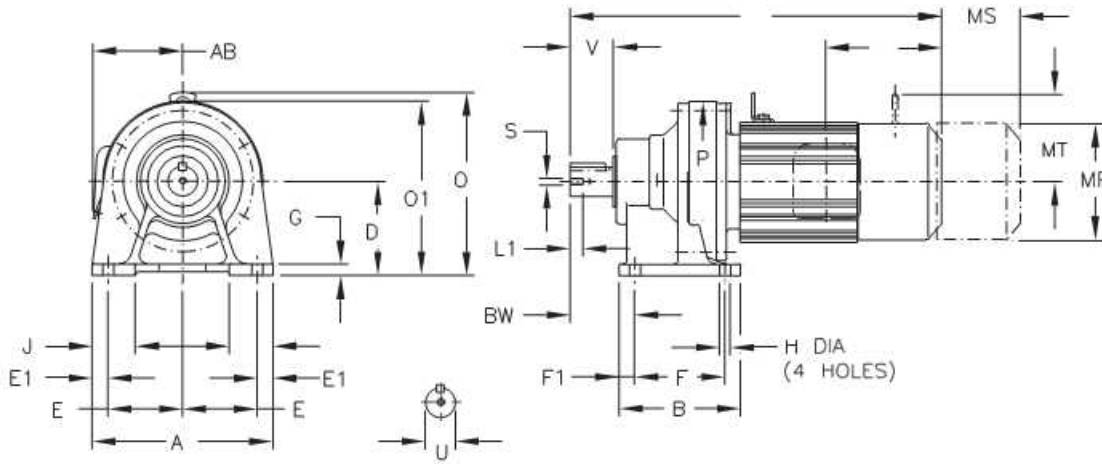


CYL_GM Series

All dimensions are mm

Model	Motor		C	Without Brake			Appx Wt(kg)	C	AB	With Brake				Appx Wt(KG)
	HP	Pole		AB	L	MP				L	MP	MS	MT	
CYL230GM	1/4	4	493	128	59	124	50	525	128	91	124	61	-	52
CYL230GM	1/3	4	493	128	59	124	50	525	128	91	124	61	-	52
CYL230GM	1/2	4	513	128	59	124	50	545	128	91	124	61	-	53
CYL230GM	3/4	4	554	138	97	148	54	597	138	140	148	93	106	53
CYL230GM	1	4	554	138	97	148	54	597	138	140	148	93	106	58
CYL230GM	1.5	4	23.11	587	143	100	160	59	649	143	162	160	115	114
CYL230GM	2	4	587	143	100	160	59	649	143	162	160	115	114	63
CYL230GM	3	4	607	150	105	173	63	670	150	168	173	121	124	68
CYL230GM	1/8	4	457	128	35	119	45	492	128	70	124	49	-	48
CYL230GM	1/4	4	499	128	59	124	47	531	128	91	124	61	-	49
CYL230GM	1/3	4	499	128	59	124	47	531	128	91	124	61	-	49
CYL230GM	1/2	4	519	128	59	124	48	551	128	91	124	61	-	50
CYL230GM	3/4	4	560	138	97	148	52	603	138	140	148	93	106	54
CYL230GM	1	4	560	138	97	148	52	603	138	140	148	93	106	54
CYL230GM	1.5	4	23.35	593	143	100	160	55	655	143	162	160	115	114
CYL230GM	2	4	593	143	100	160	55	655	143	162	160	115	114	61
CYL318GM	1/2	4	679	128	105	173	105	742	128	168	173	121	124	112
CYL318GM	3/4	4	586	138	59	124	93	622	138	91	124	61	-	95
CYL318GM	1	4	626	138	97	148	97	669	138	140	148	93	106	100
CYL318GM	1.5	4	24.65	626	143	97	148	97	669	143	140	148	93	106
CYL318GM	2	4	659	143	100	160	101	721	143	162	160	115	114	106
CYL318GM	3	4	659	150	100	160	101	721	150	162	160	115	114	106
CYL318GM	5	4	702	166	127	212	115	774	166	199	212	132	157	125
CYL318GM	7.5	4	29.37	746	166	127	212	125	818	166	199	212	132	157
CYL362GM	1/2	4	633	128	59	124	128	669	128	91	124	61	-	130
CYL362GM	3/4	4	673	138	97	148	132	716	138	140	148	93	106	135
CYL362GM	1	4	673	138	97	148	132	716	138	140	148	93	106	135
CYL362GM	1.5	4	27.80	706	143	100	160	136	768	143	162	160	115	114
CYL362GM	2	4	706	143	100	160	136	768	143	162	160	115	114	141
CYL362GM	3	4	726	150	105	173	140	789	150	168	173	121	124	147
CYL362GM	5	4	749	166	127	212	150	821	166	199	212	132	157	160
CYL362GM	7.5	4	31.22	793	166	127	212	160	865	166	199	212	132	157

Dimensions for Foot Mount Single Reduction CYF_GM Series



Model	A	B	D	E	E1	F	F1	G	H	J	P	BW
CYF105GM	144	84	80	60	12	60	12	10	9	35	110	41
CYF105 GM	144	84	80	60	12	60	12	10	9	35	110	47
CYF135 GM	144	99	90	60	12	75	12	13	9	37	134	52
CYF150 GM	180	135	100	75	15	90	15	12	11	40	150	60
CYF150 GM	180	135	100	75	15	90	15	12	11	40	150	60
CYF150 GM	180	135	120	75	15	90	15	12	11	45	150	60

Model	U*	V	Low Speed Shaft S	L1	Key
CYF105GM	12	25	M6 x 1	16	4 x 4 x 20
CYF105 GM	19	30	M6 x 1	16	5 x 5 x 27
CYF135 GM	25	35	M6 x 1	16	5 x 5 x 30
CYF150 GM	30	35	M8 x 1.25	20	6 x 6 x 30
CYF150 GM	30	35	M8 x 1.25	20	6 x 6 x 30
CYF150 GM	30	35	M8 x 1.25	20	6 x 6 x 30

Dimensions for Foot Mount Single Reduction



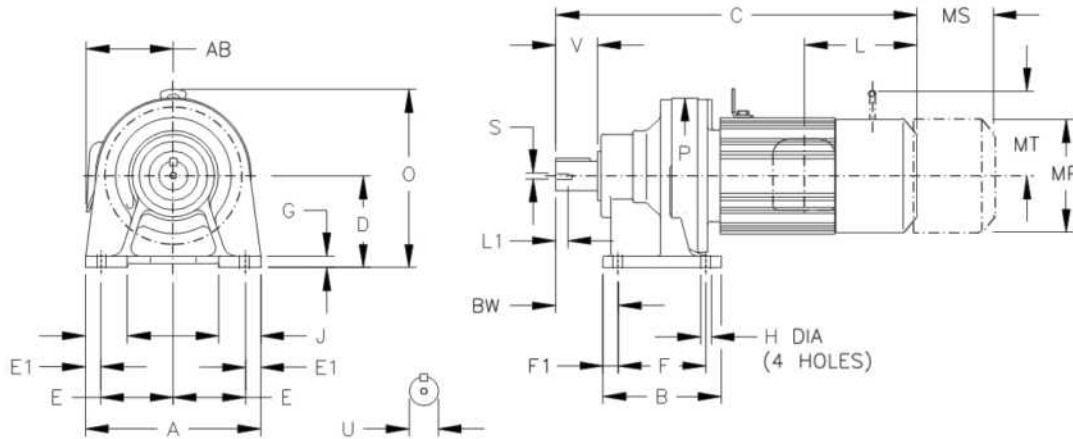
CYF_GM Series

Model	Motor		Without Brake							Appx Wt(kg)	With Brake							Appx Wt(kg)
	HP	Pole	C	O	O1	AB	L	MP	C		O	O1	AB	L	MP	MS	MT	
CYF105GM	1/8	4	226	-	142	128	35	119	6	261	-	142	128	70	124	49	-	7
CYF105GM	1/4	4	268	-	142	128	59	124	7	300	-	142	128	91	124	61	-	8
CYF105GM	1/3	4	268	-	142	128	59	124	7	300	-	142	128	91	124	61	-	8
CYF105GM	1/8	4	232	-	142	128	35	119	6	267	-	142	128	70	124	49	-	7
CYF105GM	1/4	4	274	-	142	128	59	124	7	306	-	142	128	91	124	61	-	8
CYF105GM	1/3	4	274	-	142	128	59	124	7	306	-	142	128	91	124	61	-	8
CYF105GM	1/2	4	294	-	142	128	59	124	8	326	-	142	128	91	124	61	-	9
CYF135GM	1/8	4	258	-	157	128	35	119	9	293	-	157	128	70	124	49	-	10
CYF135GM	1/4	4	300	-	157	128	59	124	10	332	-	157	128	91	124	61	-	11
CYF135GM	1/3	4	300	-	157	128	59	124	10	332	-	157	128	91	124	61	-	11
CYF135GM	1/2	4	320	-	157	128	59	124	12	352	-	157	128	91	124	61	-	13
CYF135GM	3/4	4	361	203	-	138	97	148	16	404	203	-	138	140	148	93	106	17
CYF135GM	1	4	361	203	-	138	97	148	16	404	203	-	138	140	148	93	106	17
CYF150GM	1/8	4	276	-	175	128	35	119	11	311	-	175	128	70	124	49	-	13
CYF150GM	1/4	4	318	-	175	128	59	124	12	350	-	175	128	91	124	61	-	14
CYF150GM	1/3	4	318	-	175	128	59	124	12	350	-	175	128	91	124	61	-	14
CYF150GM	1/2	4	338	-	175	128	59	124	13	370	-	175	128	91	124	61	-	15
CYF150GM	3/4	4	379	213	-	138	97	148	17	422	213	-	138	140	148	93	-	20
CYF150GM	1	4	379	213	-	138	97	148	17	422	213	-	138	140	148	93	-	20
CYF150GM	1.5	4	-	412	220	-	143	100	160	20	474	220	-	143	162	160	115	-
CYF150GM	2	4	412	220	-	143	100	160	20	474	220	-	143	162	160	115	-	25
CYF150GM	1/4	4	332	207	-	128	59	124	17	364	207	-	128	91	124	61	-	19
CYF150GM	1/3	4	332	207	-	128	59	124	17	364	207	-	128	91	124	61	-	19
CYF150GM	1/2	4	352	207	-	128	59	124	18	384	207	-	128	91	124	61	-	20
CYF150GM	3/4	4	393	213	-	138	97	148	22	436	213	-	138	140	148	93	106	25
CYF150GM	1	4	393	213	-	138	97	148	22	436	213	-	138	140	148	93	106	25
CYF150GM	1.5	4	-	426	220	-	143	100	160	26	488	220	-	143	162	160	115	114
CYF150GM	2	4	426	220	-	143	100	160	26	488	220	-	143	162	160	115	114	31
CYF150GM	3	4	446	226	-	150	105	173	30	509	226	-	150	168	173	121	124	36
CYF150GM	1/4	4	332	227	-	128	59	124	18	364	227	-	128	91	124	61	-	20
CYF150GM	1/3	4	332	227	-	128	59	124	18	364	227	-	128	91	124	61	-	20
CYF150GM	1/2	4	352	227	-	128	59	124	19	384	227	-	128	91	124	61	-	21
CYF150GM	3/4	4	393	233	-	138	97	148	23	436	233	-	138	140	148	93	106	26
CYF150GM	1	4	393	233	-	138	97	148	23	436	233	-	138	140	148	93	106	26
CYF150GM	1.5	4	-	426	240	-	143	100	160	27	488	240	-	143	162	160	115	114
CYF150GM	2	4	426	240	-	143	100	160	27	488	240	-	143	162	160	115	114	32
CYF150GM	3	4	446	246	-	150	105	173	31	509	246	-	150	168	173	121	124	37

Dimensions for Foot Mount

Single Reduction

CYF_GM Series



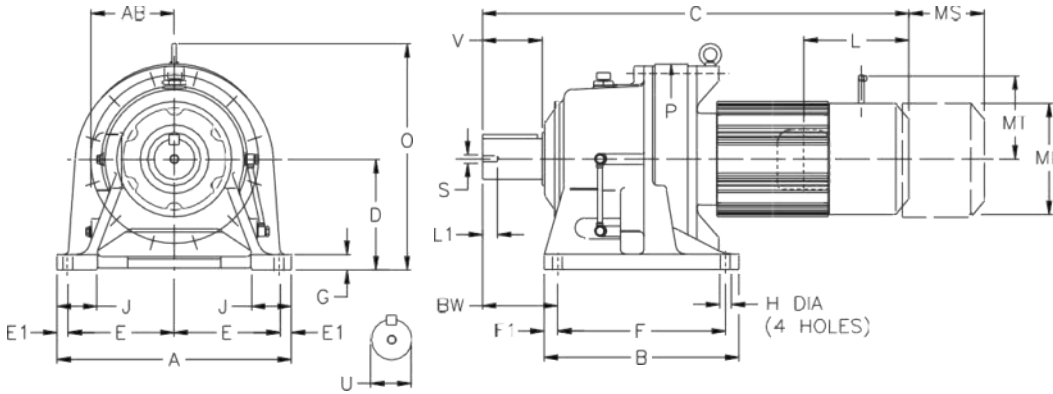
All dimensions in mm

Model	B	D	E	E1	F	F1	G	H	J	P	BW	
CYF162GM	180	135	120	75	15	90	15	12	11	45	162	70
CYF205GM	230	155	120	95	20	115	20	15	14	55	205	82
CYF205GM	230	155	140	95	20	115	20	15	14	60	205	82

Model	Low Speed Shaft				
	U*	V	S	L1	Key
CYF162GM	35	45	M8 x 1.25	20	6 x 6 x 38
CYF205GM	40	55	M8 x 1.25	20	10 x 8 x 45
CYF205GM	40	55	M8 x 1.25	20	10 x 8 x 45

Model	Motor		Without Brake						Appx Wt(kg)	With Brake						Appx Wt(kg)
	HP	Pole	C	O	AB	L	MP	C		O	AB	L	MP	MS	MT	
CYF162GM	1/2	4	363	236	128	59	124	19	394	236	128	91	124	61	20	
CYF162GM	3/4	4	403	236	138	97	148	22	452	236	138	140	148	93	106	25
CYF162GM	1	4	403	236	138	97	148	22	452	236	138	140	148	93	106	25
CYF162GM	1.5	4	-	240	143	100	160	25	493	240	143	162	160	115	114	30
CYF162GM	2	4	436	240	143	100	160	25	493	240	143	162	160	115	114	30
CYF162GM	3	4	456	246	150	105	173	29	519	246	150	168	173	121	124	35
CYF162GM	5	4	491	266	166	127	212	39	563	266	166	199	212	132	157	49
CYF205GM	3/4	4	423	233	138	97	148	31	466	233	138	140	148	93	106	34
CYF205GM	1	4	423	233	138	97	148	31	466	233	138	140	148	93	106	34
CYF205GM	1.5	4	456	240	143	100	160	35	518	240	143	162	160	115	114	40
CYF205GM	2	4	456	240	143	100	160	35	518	240	143	162	160	115	114	40
CYF205GM	3	4	476	246	150	105	173	39	539	246	150	168	173	121	124	45
CYF205GM	5	4	499	266	166	127	212	49	571	266	166	199	212	132	157	59
CYF205GM	7.5	4	543	266	166	127	212	55	615	266	166	199	212	132	157	66
CYF205GM	3/4	4	423	253	138	97	148	32	466	253	138	140	148	93	106	35
CYF205GM	1	4	423	253	138	97	148	32	466	253	138	140	148	93	106	35
CYF205GM	1.5	4	456	260	143	100	160	36	518	260	143	162	160	115	114	41
CYF205GM	2	4	456	260	143	100	160	36	518	260	143	162	160	115	114	41
CYF205GM	3	4	476	266	150	105	173	40	539	266	150	168	173	121	124	47
CYF205GM	5	4	499	286	166	127	212	50	571	286	166	199	212	132	157	59
CYF205GM	7.5	4	543	286	166	127	212	57	615	286	166	199	212	132	157	67

Dimensions for Foot Mount Single Reduction CYF_GM Series



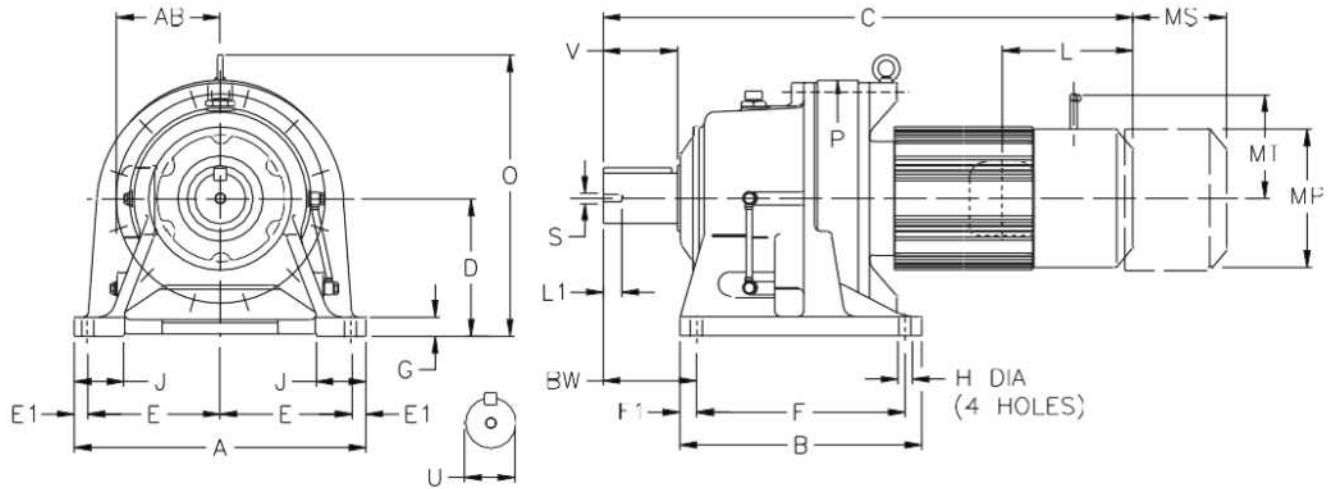
All dimensions in mm

Model	A	B	D	E	E1	F	F1	G	H	J	P	BW
CYF230GM	330	195	150	145	20	145	25	22	18	65	230	100
CYF230GM	330	195	150	145	20	145	25	22	18	65	230	120
CYF230GM	330	195	160	145	20	145	25	22	18	70	230	120

Model	Low Speed Shaft				Key
	U*	V	S	L1	
CYF230GM	50	70	M10 x 1.5	18	14 x 9 x 55
CYF230GM	50	90	M10 x 1.5	18	14 x 9 x 75
CYF230GM	50	90	M10 x 1.5	18	14 x 9 x 75

Model	Motor Pole		Without Brake						Appx Wt(kg)	With Brake						Appx Wt(kg)
	HP	Pole	C	O	AB	L	MP	C		O	AB	L	MP	MS	MT	
CYF230GM	1	4	477	265	138	97	148	50	520	265	138	140	148	93	106	53
CYF230GM	1.5	4	510	268	143	100	160	119	572	268	143	162	160	115	114	55
CYF230GM	2	4	510	268	143	100	160	119	572	268	143	162	160	115	114	59
CYF230GM	3	4	530	274	150	105	173	126	593	274	150	168	173	121	124	63
CYF230GM	5	4	553	296	166	127	212	148	625	296	166	199	212	132	157	77
CYF230GM	1.5	4	530	268	143	100	160	121	592	268	143	162	160	115	114	78
CYF230GM	2	4	530	268	143	100	160	121	592	268	143	162	160	115	114	59
CYF230GM	3	4	550	274	150	105	173	128	613	274	150	168	173	121	124	64
CYF230GM	5	4	573	296	166	127	212	150	645	296	166	199	212	132	157	77
CYF230GM	1.5	4	530	278	143	100	160	126	592	278	143	162	160	115	114	58
CYF230GM	2	4	530	278	143	100	160	126	592	278	143	162	160	115	114	62
CYF230GM	3	4	550	284	150	105	173	132	613	284	150	168	173	121	124	67
CYF230GM	5	4	573	306	166	127	212	154	645	306	166	199	212	132	157	79

Dimensions for Foot Mount Single Reduction CYF_GM Series



All dimensions in mm

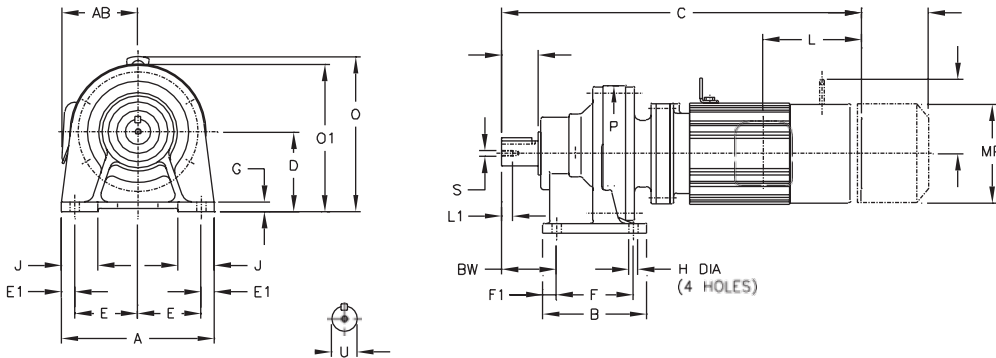
Model	A	B	D	E	E1	F	F1	G	H	J	P	BW
CYF318GM	410	238	160	185	20	150	44	25	18	75	318	139
CYF318GM	410	238	200	185	20	150	44	25	18	80	318	139
CYF362GM	430	335	200	190	25	275	30	30	22	80	362	125

Model	U *	V	Low Speed Shaft		Key
			S	L1	
CYF318GM	60	90	M10 x 1.5	18	14 x 9 x 75
CYF318GM	60	90	M10 x 1.5	18	14 x 9 x 75
CYF362GM	70	90	M12 x 1.75	24	20 x 12 x 80

Model	Motor		Without Brake					Appx Wt(kg)	With Brake						Appx Wt(kg)	
	HP	Pole	C	O	AB	L	MP		C	O	AB	L	MP	MS		MT
CYF318GM	2	4	583	310	143	100	160	92	645	310	143	162	160	115	114	97
CYF318GM	3	4	598	310	150	105	173	95	661	310	150	168	173	121	124	101
CYF318GM	5	4	621	310	166	127	212	104	693	310	166	199	212	132	157	114

Model	Motor		Without Brake					Appx Wt(kg)	With Brake						Appx Wt(kg)	
	HP	Pole	C	O	AB	L	MP		C	O	AB	L	MP	MS		MT
CYF318GM	2	4	583	350	143	100	160	97	645	350	143	162	160	115	114	102
CYF318GM	3	4	598	350	150	105	173	100	661	350	150	168	173	121	124	106
CYF318GM	5	4	621	350	166	127	212	109	693	350	166	199	212	132	157	119
CYF362GM	5	4	680	403	166	127	212	145	752	403	166	199	212	132	157	155

Dimensions for Foot Mount Double Reduction CYF_GM Series



All dimensions in mm

Model	A	B	D	E	E1	F	F1	G	H	J	P	BW
CYF105GM	144	84	80	60	12	60	12	10	9	35	105	41
CYF105GM	144	84	80	60	12	60	12	10	9	35	105	47
CYF150GM	180	135	100	75	15	90	15	12	11	40	150	60
CYF150GM	180	135	100	75	15	90	15	12	11	40	150	60
CYF205GM	230	155	120	95	20	115	20	15	14	55	205	82

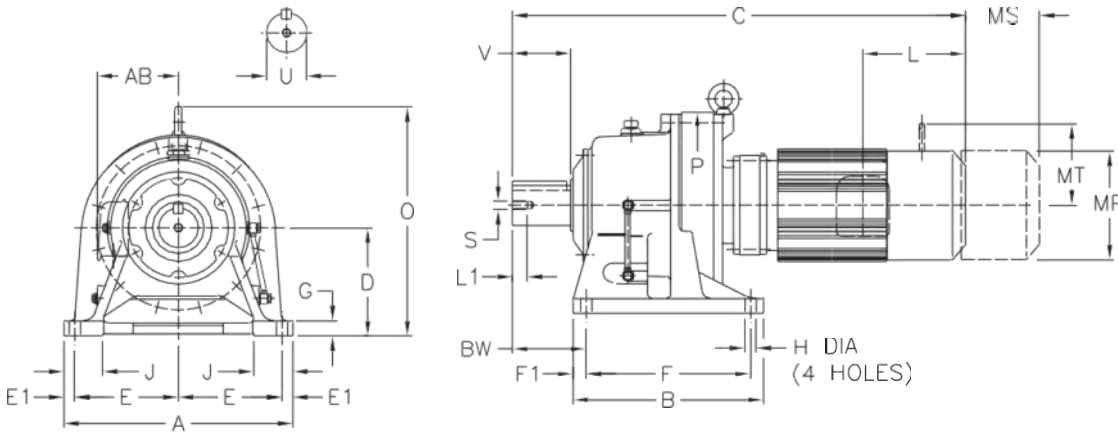
Model	Low Speed Shaft				
	U*	V	S	L1	Key
CYF105GM	12	25	M6 x 1	16	4 x 4 x 20
CYF105GM	19	30	M6 x 1	16	5 x 5 x 27
CYF150GM	30	35	M8 x 1.25	20	6 x 6 x 30
CYF150GM	30	35	M8 x 1.25	20	6 x 6 x 30
CYF205GM	40	55	M8 x 1.25	20	10 x 8 x 45

Model	Motor		Without Brake						Appx Wt(kg)	With Brake						Appx Wt(kg)		
	HP	Pole	C	O	O1	AB	L	MP		C	O	O1	AB	L	MP		MS	MT
CYF105GM	1/8	4	259	-	142	128	35	119	8	294	-	142	128	70	124	49	-	9
CYF105GM	1/8	4	265	--	142	128	35	119	8	300	-	142	128	70	124	49	-	9
CYF105GM	1/4	4	307		142	128	59	124	9	339	-	142	128	91	124	61	-	10
CYF150GM	1/8	4	324	207	-	128	35	119	16	359	207	-	128	70	124	49	-	17
CYF150GM	1/4	4	366	207	-	128	59	124	17	398	207	-	128	91	124	61	-	18
CYF150GM	1/3	4	366	207	-	128	59	124	17	398	207	-	128	91	124	61	-	18
CYF150GM	1/2	4	386	207	-	128	59	124	18	418	207	-	128	91	124	61	-	19
CYF150GM	1/8	4	338	207	-	128	35	119	18	373	207	-	128	70	124	49	-	19
CYF150GM	1/4	4	380	207	-	128	59	124	19	412	207	-	128	91	124	61	-	20
CYF150GM	1/3	4	380	207	-	128	59	124	19	412	207	-	128	91	124	61	-	20
CYF150GM	1/2	4	400	207	-	128	59	124	20	432	207	-	128	91	124	61	-	21
CYF205GM	1/8	4	386	257	-	128	35	119	32	421	257	-	128	70	124	49	-	34
CYF205GM	1/4	4	428	257	-	128	59	124	33	473	257	-	128	91	124	61	-	35
CYF205GM	1/3	4	428	257	-	128	59	124	33	473	257	-	128	91	124	61	-	35
CYF205GM	1/2	4	448	257	-	128	59	124	34	473	257	-	128	91	124	61	-	36
CYF205GM	3/4	4	489	257	-	138	97	148	38	532	257	-	138	140	148	93	106	41
CYF205GM	1	4	489	257	-	138	97	148	38	532	257	-	138	140	148	93	106	41
CYF205GM	1.5	4	20.31	516	257	-	143	100	160	41	578	257	-	143	162	160	115	114
CYF205GM	2	4	516	257	-	143	100	160	41	578	257	-	143	162	160	115	114	45

Dimensions for Foot Mount

Double Reduction

CYF_GM Series



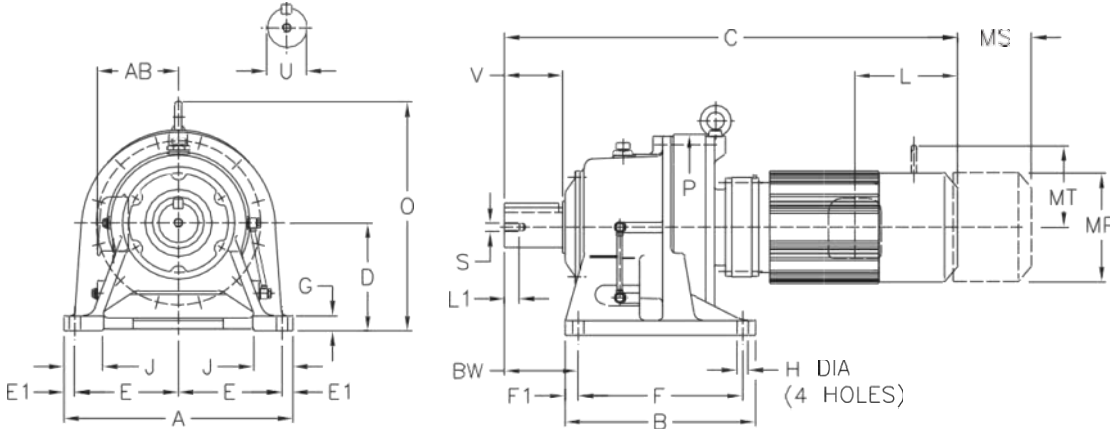
All dimensions in mm

Model	A	B	D	E	E1	F	F1	G	H	J	P	BW
CYF230GM	330	195	150	145	20	145	25	22	18	65	230	100
CYF230GM	330	195	150	145	20	145	25	22	18	65	230	120

Model	U *	V	Low Speed Shaft S	L1	Key
CYF230GM	50	70	M10 x 1.5	18	14 x 9 x 55
CYF230GM	50	70	M10 x 1.5	18	14 x 9 x 55

Model	Motor		Without Brake						Appx Wt(kg)	With Brake						Appx Wt(kg)
	HP	Pole	C	O	AB	L	MP	C		O	AB	L	MP	MS	MT	
CYF230GM	1/4	4	493	300	128	59	124	50	525	300	128	91	124	61	-	52
CYF230GM	1/3	4	493	300	128	59	124	50	525	300	128	91	124	61	-	52
CYF230GM	1/2	4	513	300	128	59	124	50	545	300	128	91	124	61	-	53
CYF230GM	3/4	4	554	263	138	97	148	54	597	263	138	140	148	93	106	58
CYF230GM	1	4	554	263	138	97	148	54	597	263	138	140	148	93	106	58
CYF230GM	1.5	4	23.11	587	270	143	100	160	59	649	270	143	162	160	115	114
CYF230GM	2	4	587	270	143	100	160	59	649	270	143	162	160	115	114	63
CYF230GM	3	4	607	276	150	105	173	63	670	276	150	168	173	121	124	68
CYF230GM	1/4	4	499	300	128	59	124	48	531	300	128	91	124	61	-	50
CYF230GM	1/3	4	499	300	128	59	124	48	531	300	128	91	124	61	-	50
CYF230GM	1/2	4	519	300	128	59	124	49	551	300	128	91	124	61	-	50
CYF230GM	3/4	4	560	263	138	97	148	53	603	263	138	140	148	93	106	55
CYF230GM	1	4	560	263	138	97	148	53	603	263	138	140	148	93	106	55
CYF230GM	1.5	4	23.35	593	270	143	100	160	55	655	270	143	162	160	115	114
CYF230GM	2	4	593	270	143	100	160	55	655	270	143	162	160	115	114	61

Dimensions for Foot Mount Double Reduction CYF_GM Series



All dimensions in mm

Model	A	B	D	E	E1	F	F1	G	H	J	P	BW
CYF318GM	410	238	160	185	20	150	44	25	18	75	318	139
CYF362GM	430	335	200	190	25	275	30	30	22	80	362	125

Model	Low Speed Shaft				
	U*	V	S	L1	Key
CYF318GM	60	90	M10 x 1.5	18	14 x 9 x 75
CYF362GM	70	90	M12 x 1.75	24	20 x 12 x 80

Model	Motor		Without Brake						Appx Wt(kg)	With Brake						Appx Wt(kg)
	HP	Pole	C	O	AB	L	MP	C		O	AB	L	MP	MS	MT	
CYF318GM	1/2	4	586	349	128	59	124	97	622	349	128	91	124	61	-	99
CYF318GM	3/4	4	626	349	138	97	148	101	669	349	138	140	148	93	106	104
CYF318GM	1	4	626	349	138	97	148	101	669	349	138	140	148	93	106	104
CYF318GM	1.5	4	25.94	659	349	143	100	160	105	721	349	143	162	160	115	114
CYF318GM	2	4	659	349	143	100	160	105	721	349	143	162	160	115	114	110
CYF318GM	3	4	679	349	150	105	173	109	742	349	150	168	173	121	124	116
CYF318GM	5	4	702	349	166	127	212	119	774	349	166	199	212	132	157	129
CYF318GM	7.5	4	29.37	746	349	166	127	212	126	818	349	166	199	212	132	157
CYF362GM	1/2	4	633	416	128	59	124	131	669	416	128	91	124	61	-	133
CYF362GM	3/4	4	673	416	138	97	148	135	716	416	138	140	148	93	106	138
CYF362GM	1	4	673	416	138	97	148	135	716	416	138	140	148	93	106	138
CYF362GM	1.5	4	27.80	706	416	143	100	160	139	768	416	143	162	160	115	114
CYF362GM	2	4	706	416	143	100	160	139	768	416	143	162	160	115	114	144
CYF362GM	3	4	726	416	150	105	173	143	789	416	150	168	173	121	124	150
CYF362GM	5	4	749	416	166	127	212	153	821	416	166	199	212	132	157	163

Lined writing area



**PRECISION IN
ACTION,
AHEAD OF THE
CURVE.**

Hyllo
TRANSMISSIONS